

Datasheet for ABIN500294
anti-MTBP antibody (Middle Region)[Go to Product page](#)

2 Images

Overview

Quantity:	0.1 mg
Target:	MTBP
Binding Specificity:	AA 122-139, Middle Region
Reactivity:	Human
Host:	Rabbit
Clonality:	Polyclonal
Conjugate:	This MTBP antibody is un-conjugated
Application:	Western Blotting (WB), Enzyme Immunoassay (EIA), Immunofluorescence (IF)

Product Details

Immunogen:	MTBP antibody was raised against a synthetic peptide corresponding to amino acids 122 to 139 of human MTBP, which differ from the mouse sequence by three amino acids (7).
Isotype:	IgG
Specificity:	This antibody detects MTBP at center.
Cross-Reactivity (Details):	Species reactivity (tested):Human
Purification:	Peptide affinity chromatography

Target Details

Target:	MTBP
Alternative Name:	MTBP (MTBP Products)

Target Details

Background:	<p>The p53 tumor-suppressor gene integrates numerous signals that control cell life and death. Several novel molecules involved in p53 network, including Chk2 , p53R2 (2), p53AIP1 (3), Noxa (4), PIDD (5), PID/MTA2 (6) and MTBP (7), were recently discovered. The transcriptional activity of p53 is modulated by posttranslational regulations of the p53 protein including stabilization and acetylation. P53 transcriptionally activates MDM2 gene then the translated MDM2 protein binds to p53 and promotes the degradation of p53 leading to lowering the concentration of p53 protein. MDM2 inhibits both p53 mediated G1 arrest and apoptosis. A recently discovered protein termed MTBP was found to bind to MDM2 and to inhibit the modulation effect of MDM2 on p53 (7). MTBP is expressed in a variety of normal tissues (7).Synonyms: Mdm2, Mdm2-binding protein, hMTBP</p>
Gene ID:	27085
NCBI Accession:	NP_071328
UniProt:	Q96DY7

Application Details

Application Notes:	<p>ELISA. Western blot. Immunocytochemistry.</p> <p>Other applications not tested.</p> <p>Optimal dilutions are dependent on conditions and should be determined by the user.</p>
Restrictions:	For Research Use only

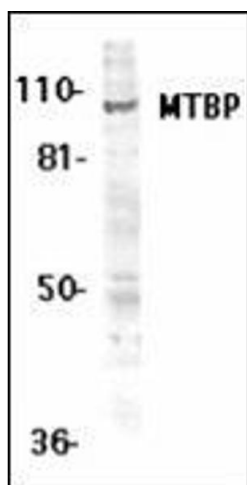
Handling

Buffer:	PBS containing 0.02 % sodium azide
Preservative:	Sodium azide
Precaution of Use:	This product contains sodium azide: a POISONOUS AND HAZARDOUS SUBSTANCE which should be handled by trained staff only.
Handling Advice:	Avoid repeated freezing and thawing.
Storage:	4 °C/-20 °C
Storage Comment:	Store at 2 - 8 °C for up to one month or (in aliquots) at -20 °C for longer.



Immunofluorescence

Image 1. Immunocytochemistry of MTBP in K562 cells with this product at 5 µg/ml.



Western Blotting

Image 2. Western blot analysis of MTBP expression in K562 whole cell lysates with this product at 1 µg /ml.