

Datasheet for ABIN500296
anti-MTCH2 antibody (N-Term)[Go to Product page](#)

2 Images

Overview

Quantity:	0.1 mg
Target:	MTCH2
Binding Specificity:	N-Term
Reactivity:	Human
Host:	Rabbit
Clonality:	Polyclonal
Conjugate:	This MTCH2 antibody is un-conjugated
Application:	Western Blotting (WB), Immunohistochemistry (Paraffin-embedded Sections) (IHC (p)), Enzyme Immunoassay (EIA)

Product Details

Immunogen:	MTCH2 antibody was raised against a 15 amino acid peptide near the amino terminus of human MTCH2.
Isotype:	IgG
Specificity:	This antibody detects MTCH2.
Cross-Reactivity (Details):	Species reactivity (tested):Human
Purification:	Peptide affinity chromatography

Target Details

Target:	MTCH2
---------	-------

Target Details

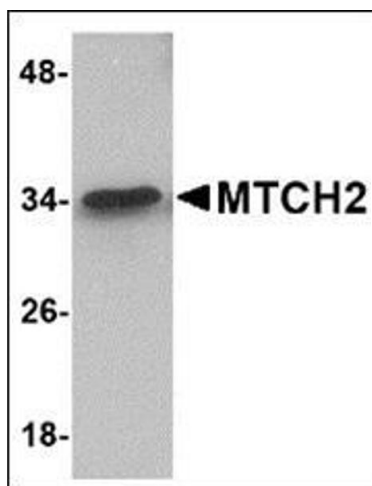
Alternative Name:	MTCH2 (MTCH2 Products)
Background:	Apoptosis plays a major role in normal organism development, tissue homeostasis, and removal of damaged cells. Disruption of this process has been implicated in a variety of diseases such as cancer. The Bcl-2 family of proteins is comprised of critical regulators of apoptosis that can be divided into two classes: those that inhibit apoptosis and those that promote cell death. MTCH2 is a member of the mitochondrial carrier protein family that catalyze the exchange of substrates across the inner mitochondrial membrane and is targeted by Bid, a pro-apoptotic Bcl-2 family member, in response to apoptotic signals, suggesting that MTCH2 may play a key role in the mitochondrial apoptosis pathway. Synonyms: HSPC032, MIMP, Met-induced mitochondrial protein, Mitochondrial carrier homolog 2
Gene ID:	56428
UniProt:	Q791V5

Application Details

Application Notes:	ELISA. Western blot: 1 - 2 µg/mL. Immunohistochemistry on paraffin sections. Other applications not tested. Optimal dilutions are dependent on conditions and should be determined by the user.
Restrictions:	For Research Use only

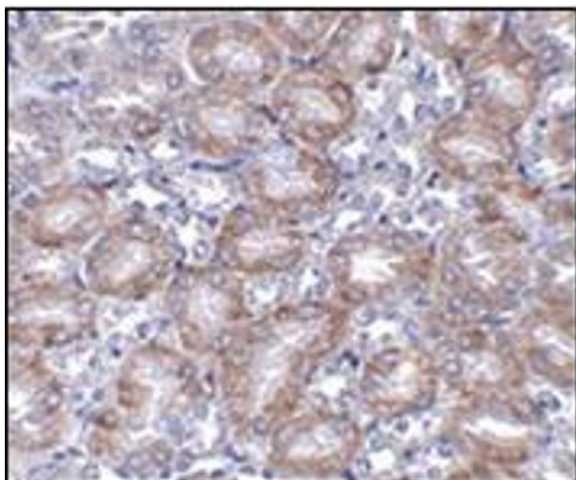
Handling

Buffer:	PBS containing 0.02 % sodium azide
Preservative:	Sodium azide
Precaution of Use:	This product contains sodium azide: a POISONOUS AND HAZARDOUS SUBSTANCE which should be handled by trained staff only.
Handling Advice:	Avoid repeated freezing and thawing.
Storage:	4 °C/-20 °C
Storage Comment:	Store at 2 - 8 °C for up to one month or (in aliquots) at -20 °C for longer.



Western Blotting

Image 1. Western blot analysis of MTCH2 in 293 cell lysate with this product at 1 µg/ml.



Immunohistochemistry (Paraffin-embedded Sections)

Image 2. Immunohistochemistry of MTCH2 in mouse kidney tissue AP30569PU-N antibody at 5 µg/ml.