

Datasheet for ABIN500312

anti-NLRP2 antibody (C-Term)[Go to Product page](#)**1** Image

Overview

Quantity:	0.1 mg
Target:	NLRP2
Binding Specificity:	C-Term
Reactivity:	Human, Mouse, Rat
Host:	Rabbit
Clonality:	Polyclonal
Conjugate:	This NLRP2 antibody is un-conjugated
Application:	Western Blotting (WB), Enzyme Immunoassay (EIA)

Product Details

Immunogen:	NALP2 antibody was raised against a peptide corresponding to 12 amino acids near the carboxy-terminus of human NALP2.
Isotype:	IgG
Specificity:	This antibody detects NALP2.
Cross-Reactivity (Details):	Species reactivity (tested): Human, mouse, rat
Purification:	Peptide affinity chromatography

Target Details

Target:	NLRP2
Alternative Name:	NALP2 (NLRP2 Products)

Target Details

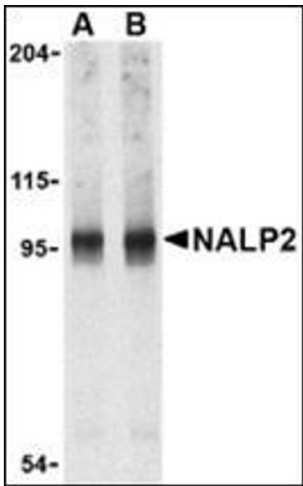
Background:	NALP2 belongs to a family of cytoplasmic proteins that have been implicated in cell responses to apoptotic and inflammatory stimuli (1). Unlike the prototypical NALP protein NALP1, NALP2 only contains a NACHT domain, leucine rich repeat (LRR), and pyrin-containing domain (PYD) (2). This protein interacts with the adapter protein ASC in addition to CARD8 and caspase-1 to form an inflammasome with high proIL-1 β -processing activity and is thought to function as a modulator of NF- κ B and procaspase-1 activation in macrophages (2,3). It has also been suggested that NALP2, in addition to other NALP family members, can act as innate sensors of pathogens in a manner similar to the toll-like receptors (TLRs) (4). At least two alternatively spliced transcript variants encoding distinct isoforms have been found for NALP2.Synonyms: LRR and PYD domains-containing protein 2, NACHT, NBS1, NLRP2, PAN1, PYPAF2
Gene ID:	55655
NCBI Accession:	NP_060322
UniProt:	Q9NX02
Pathways:	Production of Molecular Mediator of Immune Response , Positive Regulation of Endopeptidase Activity , Inflammasome

Application Details

Application Notes:	ELISA. Western blot. Other applications not tested. Optimal dilutions are dependent on conditions and should be determined by the user.
Restrictions:	For Research Use only

Handling

Buffer:	PBS containing 0.02 % sodium azide
Preservative:	Sodium azide
Precaution of Use:	This product contains sodium azide: a POISONOUS AND HAZARDOUS SUBSTANCE which should be handled by trained staff only.
Handling Advice:	Avoid repeated freezing and thawing.
Storage:	4 °C/-20 °C
Storage Comment:	Store at 2 - 8 °C for up to one month or (in aliquots) at -20 °C for longer.



Western Blotting

Image 1. Western blot analysis of NALP2 in PC-3 cell lysate with this product at (A) 1 and (B) 2 µg/ml.