



[Go to Product page](#)

Datasheet for ABIN500328

anti-Neudesin antibody (C-Term)

2 Images

Overview

Quantity:	0.1 mg
Target:	Neudesin (NENF)
Binding Specificity:	C-Term
Reactivity:	Human, Mouse, Rat
Host:	Rabbit
Clonality:	Polyclonal
Conjugate:	This Neudesin antibody is un-conjugated
Application:	Western Blotting (WB), Immunohistochemistry (Paraffin-embedded Sections) (IHC (p)), Enzyme Immunoassay (EIA)

Product Details

Immunogen:	NENF antibody was raised against a 15 amino acid peptide from near the carboxy terminus of human NENF.
Isotype:	IgG
Specificity:	This antibody detects Neudesin.
Cross-Reactivity (Details):	Species reactivity (tested):Human, mouse, rat
Purification:	Peptide affinity chromatography

Target Details

Target:	Neudesin (NENF)
---------	-----------------

Target Details

Alternative Name: Neudesin ([NENF Products](#))

Background: NENF is a secreted protein that is expressed in neurons but not glial cells of the brain. This protein has neurotrophic activity in primary cultured mouse neurons but not mitogenic activity in primary cultured mouse astrocytes. NENF activated mitogen-activated protein (MAP) and phosphatidylinositol-3 kinase pathways and could be inhibited by pertussis toxin but not receptor tyrosine kinases, suggesting that NENF acts through a Gi/Go-protein-coupled receptor. Despite its predicted molecular weight of ~20 kDa, NENF is observed at 37 kDa in SDS-PAGE. Synonyms: CIR2, Cell immortalization-related protein 2, NENF, Neuron-derived neurotrophic factor, SPUF, Secreted protein of unknown function

Gene ID: 29937

NCBI Accession: [NP_037481](#)

UniProt: [Q9UMX5](#)

Application Details

Application Notes: ELISA. Western blot: 1 - 2 µg/mL. Immunohistochemistry on paraffin sections.
Other applications not tested.
Optimal dilutions are dependent on conditions and should be determined by the user.

Restrictions: For Research Use only

Handling

Buffer: PBS containing 0.02 % sodium azide

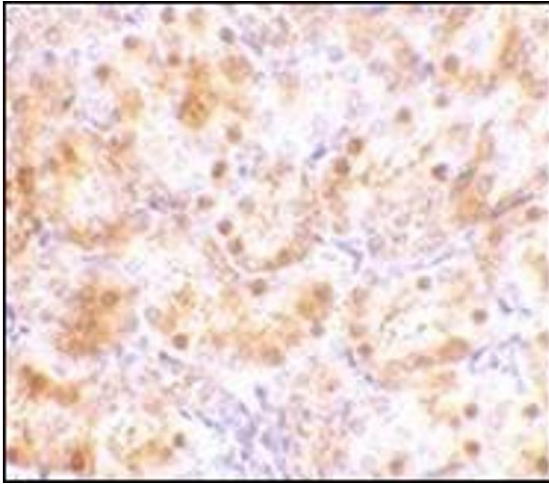
Preservative: Sodium azide

Precaution of Use: This product contains sodium azide: a POISONOUS AND HAZARDOUS SUBSTANCE which should be handled by trained staff only.

Handling Advice: Avoid repeated freezing and thawing.

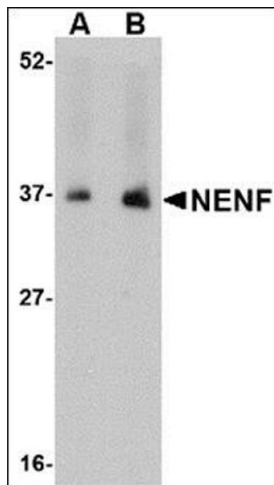
Storage: 4 °C/-20 °C

Storage Comment: Store at 2 - 8 °C for up to one month or (in aliquots) at -20 °C for longer.



Immunohistochemistry (Paraffin-embedded Sections)

Image 1. Immunohistochemistry of NENF in rat kidney tissue with this product at 10 µg/ml.



Western Blotting

Image 2. Western blot analysis of NENF in human kidney tissue lysate with this product at (A) 1 and (B) 2 µg/ml.