

Datasheet for ABIN5003557  
**anti-GLRB antibody (AA 51-150)**[Go to Product page](#)

## 2 Images

## Overview

Quantity:	100 µL
Target:	GLRB
Binding Specificity:	AA 51-150
Reactivity:	Human, Mouse, Rat
Host:	Rabbit
Clonality:	Polyclonal
Conjugate:	This GLRB antibody is un-conjugated
Application:	Western Blotting (WB), ELISA, Immunofluorescence (Cultured Cells) (IF (cc)), Immunofluorescence (Paraffin-embedded Sections) (IF (p)), Immunocytochemistry (ICC), Immunohistochemistry (Frozen Sections) (IHC (fro)), Immunohistochemistry (Paraffin-embedded Sections) (IHC (p))

## Product Details

Immunogen:	KLH conjugated synthetic peptide derived from human GLRB
Isotype:	IgG
Cross-Reactivity:	Human, Mouse, Rat
Predicted Reactivity:	Dog,Cow,Sheep,Pig,Horse,Rabbit
Purification:	Purified by Protein A.

## Target Details

Target:	GLRB
---------	------

## Target Details

Alternative Name:	GLRB ( <a href="#">GLRB Products</a> )
Background:	<p>Synonyms: Glycine receptor subunit beta, GLRB, Glycine receptor 58 kDa subunit</p> <p>Background: Glycine receptors are ligand-gated chloride channels. GLRB does not form ligand-gated ion channels by itself, but is part of heteromeric ligand-gated chloride channels. Channel opening is triggered by extracellular glycine (PubMed:8717357, PubMed:15302677, PubMed:16144831, PubMed:22715885, PubMed:25445488, PubMed:11929858, PubMed:23238346). Heteropentameric channels composed of GLRB and GLRA1 are activated by lower glycine levels than homopentameric GLRA1 (PubMed:8717357). Plays an important role in the down-regulation of neuronal excitability (PubMed:11929858, PubMed:23238346). Contributes to the generation of inhibitory postsynaptic currents (PubMed:25445488).</p>
Gene ID:	2743
UniProt:	<a href="#">P48167</a>

## Application Details

Application Notes:	WB 1:300-5000 ELISA 1:500-1000 IHC-P 1:200-400 IHC-F 1:100-500 IF(IHC-P) 1:50-200 IF(IHC-F) 1:50-200 IF(ICC) 1:50-200 ICC 1:100-500
Restrictions:	For Research Use only

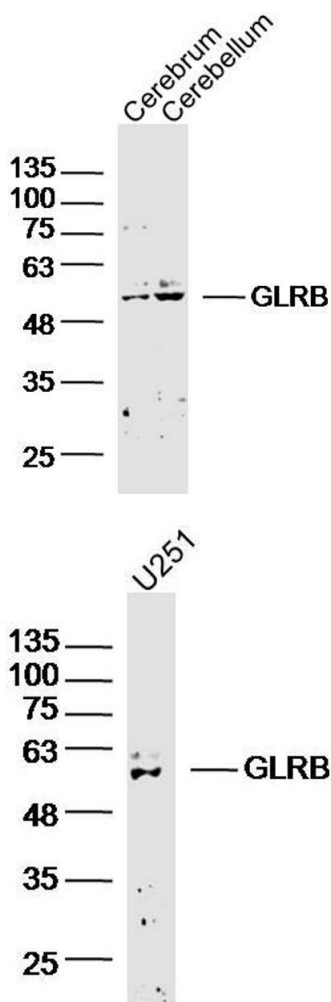
## Handling

Format:	Liquid
Concentration:	1 µg/µL
Buffer:	0.01M TBS( pH 7.4) with 1 % BSA, 0.02 % Proclin300 and 50 % Glycerol.
Preservative:	ProClin
Precaution of Use:	This product contains ProClin: a POISONOUS AND HAZARDOUS SUBSTANCE, which should be handled by trained staff only.
Storage:	4 °C,-20 °C

Handling

Storage Comment:	Shipped at 4°C. Store at -20°C for one year. Avoid repeated freeze/thaw cycles.
Expiry Date:	12 months

Images



Western Blotting

**Image 1.** Lane 1: Mouse Cerebrum; Lane 2: Mouse Cerebellum lysates probed with GLRB Polyclonal Antibody, Unconjugated (bs-20450R) at 1:300 overnight at 4°C. Followed by a conjugated secondary antibody at 1:20000 for 90 min at 37°C.

Western Blotting

**Image 2.** U251 cell lysates probed with GLRB Polyclonal Antibody, Unconjugated (bs-20450R) at 1:300 overnight at 4°C. Followed by a conjugated secondary antibody at 1:20000 for 90 min at 37°C