



[Go to Product page](#)

Datasheet for ABIN500383
anti-NPC1 antibody (C-Term)

2 Images

Overview

Quantity:	0.1 mg
Target:	NPC1
Binding Specificity:	C-Term
Reactivity:	Human
Host:	Rabbit
Clonality:	Polyclonal
Conjugate:	This NPC1 antibody is un-conjugated
Application:	Western Blotting (WB), Immunohistochemistry (Paraffin-embedded Sections) (IHC (p)), Enzyme Immunoassay (EIA)

Product Details

Immunogen:	NPC1 antibody was raised against a 16 amino acid peptide from near the carboxy terminus of human NPC1.
Isotype:	IgG
Specificity:	This antibody detects NPC1. It will not cross-react to NPC2, another gene whose defects also result in Niemann-Pick type C disease.
Cross-Reactivity (Details):	Species reactivity (tested):Human
Purification:	Peptide affinity chromatography

Target Details

Target:	NPC1
---------	------

Target Details

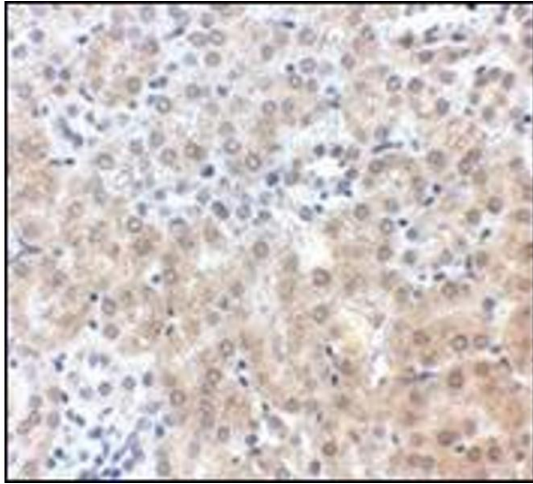
Alternative Name:	NPC1 (NPC1 Products)
Background:	Mutations in the Niemann-Pick disease type C1 (NPC1) gene result in a fatal progressive neurodegenerative disorder characterized by an abnormal sequestration of lipids including cholesterol and glycosphingolipids. The NPC1 protein is a large protein that resides in the limiting membrane of endosomes and lysosomes and mediates intracellular cholesterol trafficking via binding of cholesterol to its N-terminal domain. NPC1 transports low-density lipoproteins to late endosomal/lysosomal compartments where they are hydrolyzed and released as free cholesterol. NPC1, in addition to FTO, MC4R, and PTER has recently been shown to be a new risk loci for early-onset and morbid adult obesity in European populations. Synonyms: Niemann-Pick C1 protein
Gene ID:	4864
NCBI Accession:	NP_000262
UniProt:	O15118

Application Details

Application Notes:	ELISA. Western blot: 1 - 2 µg/mL. Immunohistochemistry on paraffin sections. Other applications not tested. Optimal dilutions are dependent on conditions and should be determined by the user.
Restrictions:	For Research Use only

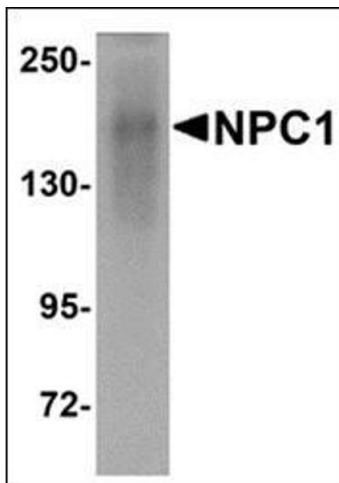
Handling

Buffer:	PBS containing 0.02 % sodium azide
Preservative:	Sodium azide
Precaution of Use:	This product contains sodium azide: a POISONOUS AND HAZARDOUS SUBSTANCE which should be handled by trained staff only.
Handling Advice:	Avoid repeated freezing and thawing.
Storage:	4 °C/-20 °C
Storage Comment:	Store at 2 - 8 °C for up to one month or (in aliquots) at -20 °C for longer.



Immunohistochemistry (Paraffin-embedded Sections)

Image 1. Immunohistochemistry of NPC1 in mouse kidney tissue with this product at 2.5 µg/ml.



Western Blotting

Image 2. Western blot analysis of NPC1 in human kidney tissue lysate with this product at 1 µg/ml.