

Datasheet for ABIN500409

**anti-Occludin antibody (C-Term)****3** Images**2** Publications[Go to Product page](#)

## Overview

Quantity:	0.1 mg
Target:	Occludin (OCLN)
Binding Specificity:	C-Term
Reactivity:	Human, Mouse, Rat
Host:	Rabbit
Clonality:	Polyclonal
Conjugate:	This Occludin antibody is un-conjugated
Application:	Western Blotting (WB), Immunofluorescence (IF), Immunohistochemistry (Paraffin-embedded Sections) (IHC (p)), Enzyme Immunoassay (EIA)

## Product Details

Immunogen:	OCLN antibody was raised against a 15 amino acid peptide from near the carboxy terminus of human OCLN.
Isotype:	IgG
Specificity:	This antibody detects OCLN.
Purification:	Peptide affinity chromatography

## Target Details

Target:	Occludin (OCLN)
Alternative Name:	Occludin ( <a href="#">OCLN Products</a> )

## Target Details

Background:	Tight junctions act as a semi-permeable barrier to the transport of ions, solutes, and water and are considered to function as a fence that divides apical and basolateral domains of plasma membranes. Tight junctions coordinate a variety of signaling and trafficking molecules regulating cell differentiation, proliferation, and polarity and contain a number of junctional proteins including Occludin, Claudins, junctional adhesion molecules (JAMs), as well as multiple scaffold proteins. Occludin, the first identified component of tight junction strands, is thought function as a signal transmitter in multiple signaling pathways and can associate with multiple kinases and phosphatases such as PI3-kinase and protein phosphatases 1 and 2A. At least two isoforms of OCLN are known to exist.Synonyms: OCLN
Gene ID:	4950
UniProt:	<a href="#">Q16625</a>
Pathways:	<a href="#">Cell-Cell Junction Organization</a> , <a href="#">Hepatitis C</a>

## Application Details

Application Notes:	ELISA. Western blot: 1 - 2 µg/mL. Immunohistochemistry on paraffin sections. Other applications not tested. Optimal dilutions are dependent on conditions and should be determined by the user.
Restrictions:	For Research Use only

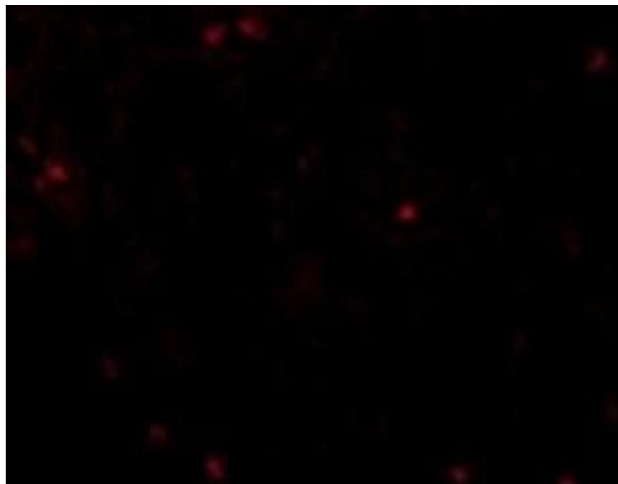
## Handling

Buffer:	PBS containing 0.02 % sodium azide as preservative
Preservative:	Sodium azide
Precaution of Use:	This product contains sodium azide: a POISONOUS AND HAZARDOUS SUBSTANCE which should be handled by trained staff only.
Handling Advice:	Avoid repeated freezing and thawing.
Storage:	4 °C/-20 °C
Storage Comment:	Store at 2 - 8 °C for up to one month or (in aliquots) at -20 °C for longer.

## Publications

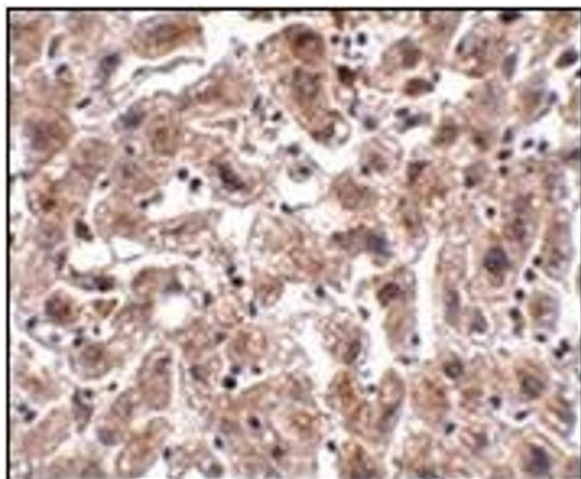
Product cited in:	Gong, Tsai, Yan, Rubin: "Cooperation between MEF2 and PPARgamma in human intestinal beta,beta-carotene 15,15'-monooxygenase gene expression." in: <b>BMC molecular biology</b> , Vol. 7,
-------------------	--

## Images



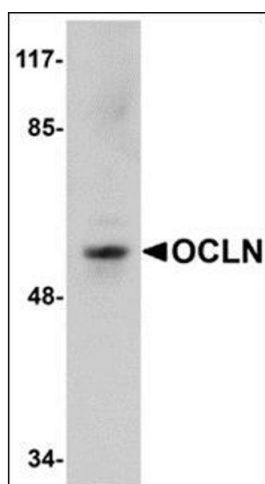
### Immunofluorescence

**Image 1.** Immunofluorescence using anti Occludin on human liver tissue at 20µg/ml



### Immunohistochemistry (Paraffin-embedded Sections)

**Image 2.** Immunohistochemistry of OCLN in human liver tissue with this product at 2.5 µg/ml.



### Western Blotting

**Image 3.** Western blot analysis of OCLN in human liver tissue lysate with this product at 1 µg/ml.