



[Go to Product page](#)

Datasheet for ABIN500421  
**anti-ORAI1 antibody (C-Term)**

2 Images

Overview

Quantity:	0.1 mg
Target:	ORAI1
Binding Specificity:	C-Term
Reactivity:	Human, Mouse, Rat
Host:	Rabbit
Clonality:	Polyclonal
Conjugate:	This ORAI1 antibody is un-conjugated
Application:	Western Blotting (WB), Immunohistochemistry (Paraffin-embedded Sections) (IHC (p)), Enzyme Immunoassay (EIA)

Product Details

Immunogen:	ORAI1 antibody was raised against a 16 amino acid peptide from near the carboxy terminus of human ORAI1.
Isotype:	IgG
Specificity:	This antibody detects ORAI1 at C-term. It is predicted to have no cross-reactivity to ORAI2 or ORAI3.
Cross-Reactivity (Details):	Species reactivity (tested):Human, mouse, rat
Purification:	Peptide affinity chromatography

Target Details

Target:	ORAI1
---------	-------

## Target Details

---

Alternative Name:	<a href="#">ORAI1 (ORAI1 Products)</a>
Background:	Antigen stimulation of immune cells triggers Ca <sup>++</sup> entry through Ca <sup>++</sup> release-activated Ca <sup>++</sup> (CRAC) channels. ORAI1 is a recently identified four-transmembrane spanning protein that is an essential component of CRAC. A missense mutation in this protein in humans is the cause of one form of hereditary severe combined immune deficiency (SCID) which results in ablated T-cell Ca <sup>++</sup> entry. It has been suggested that ORAI1 functions as a highly selective Ca <sup>++</sup> plasma membrane channel that is gated through interactions with STIM1, the store-activated endoplasmic reticulum Ca <sup>++</sup> sensor. ORAI1 often migrates at a higher than expected molecular weight in SDS-PAGE. Synonyms: CRACM1, Calcium release-activated calcium channel protein 1, ORAI-1, Protein orai-1, TMEM142A, Transmembrane protein 142A
Gene ID:	84876
UniProt:	<a href="#">Q96D31</a>
Pathways:	<a href="#">TCR Signaling</a> , <a href="#">BCR Signaling</a>

## Application Details

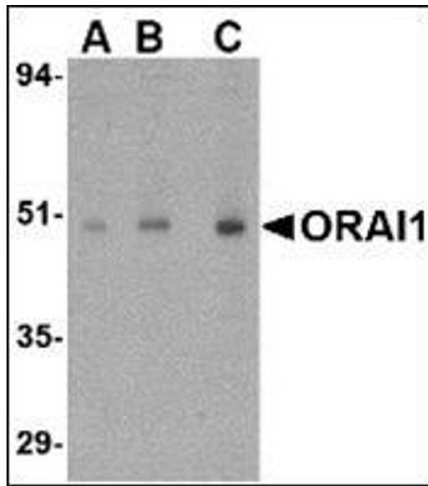
---

Application Notes:	ELISA. Western blot: 0.5 - 1 µg/mL. Immunohistochemistry on paraffin sections. Other applications not tested. Optimal dilutions are dependent on conditions and should be determined by the user.
Restrictions:	For Research Use only

## Handling

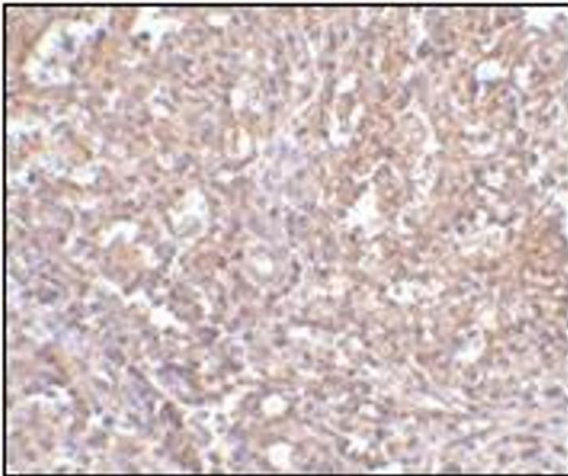
---

Buffer:	PBS containing 0.02 % sodium azide
Preservative:	Sodium azide
Precaution of Use:	This product contains sodium azide: a POISONOUS AND HAZARDOUS SUBSTANCE which should be handled by trained staff only.
Handling Advice:	Avoid repeated freezing and thawing.
Storage:	4 °C/-20 °C
Storage Comment:	Store at 2 - 8 °C for up to one month or (in aliquots) at -20 °C for longer.



#### Western Blotting

**Image 1.** Western blot analysis of ORAI1 in human ovary tissue lysate with this product at (A) 0.5, (B) 1 and (C) 2  $\mu$ g/ml.



#### Immunohistochemistry (Paraffin-embedded Sections)

**Image 2.** Immunohistochemistry of ORAI1 in human spleen tissue with this product at 2.5  $\mu$ g/ml.