

Datasheet for ABIN500451  
**anti-PARL antibody (N-Term)**[Go to Product page](#)

## 2 Images

## Overview

Quantity:	0.1 mg
Target:	PARL
Binding Specificity:	N-Term
Reactivity:	Human, Mouse, Rat
Host:	Rabbit
Clonality:	Polyclonal
Conjugate:	This PARL antibody is un-conjugated
Application:	Western Blotting (WB), Immunofluorescence (IF), Enzyme Immunoassay (EIA)

## Product Details

Immunogen:	PARL antibody was raised against a 15 amino acid peptide from near the amino terminus of human PARL.
Isotype:	IgG
Specificity:	This antibody detects PARL.
Cross-Reactivity (Details):	Species reactivity (tested): Human, mouse, rat
Purification:	Peptide affinity chromatography

## Target Details

Target:	PARL
Alternative Name:	PARL ( <a href="#">PARL Products</a> )

## Target Details

**Background:** PARL is a mitochondrial integral membrane protein and a member of the highly conserved rhomboid superfamily of membrane proteins. PARL is required for the control of apoptosis during postnatal growth and is required for the processing of OPA1, a protein that prevents the release of cytochrome C from the mitochondria in response to apoptotic signals. In lymphocytes and neurons, PARL's association with other proteins, such as the Bcl-2 family-related protein Hax1 and Omi can lead to the proteolytic processing of Omi by PARL, preventing the accumulation of Bax, thereby suppressing apoptosis. Variations in this gene have been associated with increased risk for type 2 diabetes. PARL may also play a role in the progression of Alzheimer's disease through its associations with presenilin-1 and -2. Despite its predicted molecular weight of ~42 kDa, PARL is observed at a higher molecular weight in SDS-PAGE. Multiple isoforms of PARL are known to exist. Synonyms: Mitochondrial intramembrane cleaving protease PARL, PRO2207, PSARL, Presenilins-associated rhomboid-like protein mitochondrial

**Gene ID:** 55486

**UniProt:** [Q9H300](#)

**Pathways:** [Autophagy](#)

## Application Details

**Application Notes:** ELISA. Western blot: 1 - 2 µg/mL. Immunofluorescence.  
Other applications not tested.  
Optimal dilutions are dependent on conditions and should be determined by the user.

**Restrictions:** For Research Use only

## Handling

**Buffer:** PBS containing 0.02 % sodium azide

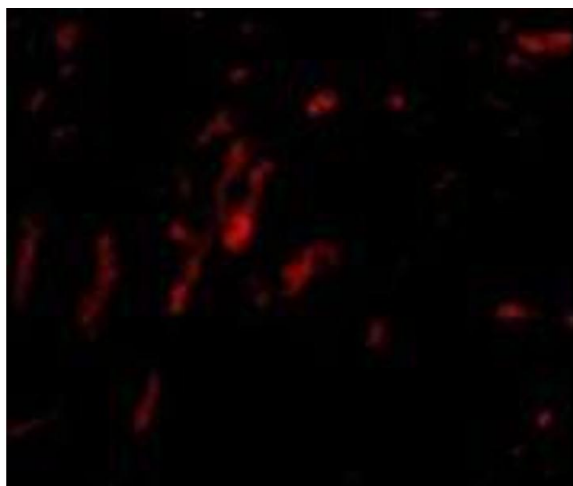
**Preservative:** Sodium azide

**Precaution of Use:** This product contains sodium azide: a POISONOUS AND HAZARDOUS SUBSTANCE which should be handled by trained staff only.

**Handling Advice:** Avoid repeated freezing and thawing.

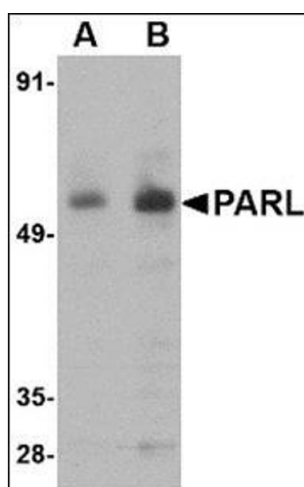
**Storage:** 4 °C/-20 °C

**Storage Comment:** Store at 2 - 8 °C for up to one month or (in aliquots) at -20 °C for longer.



#### Immunofluorescence

**Image 1.** Immunocytochemistry of PARL in 3T3 cells with this product at 2.5 µg/ml.



#### Western Blotting

**Image 2.** Western blot analysis of PARL in 3T3 cell lysate with this product at (A) 1 and (B) 2 µg/ml.