

Datasheet for ABIN500511
anti-PLEKHM2 antibody (C-Term)[Go to Product page](#)

1 Image

Overview

Quantity:	0.1 mg
Target:	PLEKHM2
Binding Specificity:	C-Term
Reactivity:	Human, Mouse, Rat
Host:	Rabbit
Clonality:	Polyclonal
Conjugate:	This PLEKHM2 antibody is un-conjugated
Application:	Western Blotting (WB), Immunohistochemistry (Paraffin-embedded Sections) (IHC (p)), Enzyme Immunoassay (EIA)

Product Details

Immunogen:	PLEKHM2 antibody was raised against a 17 amino acid peptide from near the carboxy terminus of human PLEKHM2.
Isotype:	IgG
Cross-Reactivity (Details):	Species reactivity (tested): Human, mouse, rat
Purification:	Peptide affinity chromatography

Target Details

Target:	PLEKHM2
Alternative Name:	PLEKHM2 (PLEKHM2 Products)

Target Details

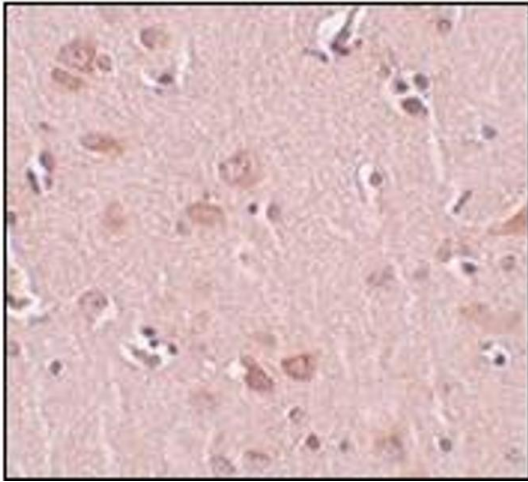
Background:	PLEKHM2, also known as SKIP, is a member of the M family of Pleckstrin homology domain-containing proteins. While little is known of PLEKHM2, a recent study examining differential gene expression in human hematopoietic stem cells has shown it to be specifically expressed in stem cells, suggesting that PLEKHM2 may play a role in erythroid commitment and development. Other studies have shown that PLEKHM2 is required for interaction with the Salmonella virulence factor SifA for Salmonella pathogenesis, suggesting that PLEKHM2 has cellular roles other than in the developing embryo.Synonyms: KIAA0842, PH domain-containing family M member 2, Pleckstrin homology domain-containing family M member 2, SKIP, Salmonella-induced filaments A and kinesin-interacting protein, SifA and kinesin-interacting protein
Gene ID:	23207
NCBI Accession:	NP_055979
UniProt:	Q8IWE5

Application Details

Application Notes:	ELISA. Western blot: 0.5 - 1 µg/mL. Immunohistochemistry on paraffin sections. Other applications not tested. Optimal dilutions are dependent on conditions and should be determined by the user.
Restrictions:	For Research Use only

Handling

Concentration:	1.0 mg/mL
Buffer:	PBS containing 0.02 % sodium azide
Preservative:	Sodium azide
Precaution of Use:	This product contains sodium azide: a POISONOUS AND HAZARDOUS SUBSTANCE which should be handled by trained staff only.
Handling Advice:	Avoid repeated freezing and thawing.
Storage:	-20 °C
Storage Comment:	Store the antibody (in aliquots) at -20 °C.



Immunohistochemistry (Paraffin-embedded Sections)

Image 1. Immunohistochemistry of FAM59A in human liver tissue with this product at 5 µg/ml.