

Datasheet for ABIN500519
anti-PPPDE1 antibody (C-Term)[Go to Product page](#)

1 Image

Overview

Quantity:	0.1 mg
Target:	PPPDE1
Binding Specificity:	C-Term
Reactivity:	Human, Mouse, Rat
Host:	Rabbit
Clonality:	Polyclonal
Conjugate:	This PPPDE1 antibody is un-conjugated
Application:	Western Blotting (WB), Enzyme Immunoassay (EIA)

Product Details

Immunogen:	PNAS4 antibody was raised against a 19 amino acid peptide near the carboxy terminus of human PNAS4.
Isotype:	IgG
Specificity:	This antibody detects PNAS4.
Cross-Reactivity (Details):	Species reactivity (tested): Human, mouse, rat
Purification:	Peptide affinity chromatography

Target Details

Target:	PPPDE1
Alternative Name:	PPPDE1 (PPPDE1 Products)

Target Details

Background: PNAS4 is a highly conserved protein that shares high homology from plants to animals. It was initially identified as a putative apoptosis-related protein in the human acute promyelocytic leukemia cell line NB4. PNAS4 is activated during the early response to DNA damage and can inhibit proliferation via apoptosis when overexpressed in some tumor cells such as U2OS, SKOV3, and A549. PNAS4 inhibits tumor cell proliferation through the following mechanisms: (i) overexpression of PNAS4 causes S phase arrest by regulating the expression of cell cycle-related proteins and (ii) PNAS4 induces apoptosis through the mitochondrial apoptosis pathway. Recent evidence has shown that PNAS4 may be involved in the genesis of some cancers and could be a potential candidate for lung cancer therapy alone or in combination with gemcitabine. At least two isoforms of PNAS4 are known to exist. Synonyms: C1orf121, CGI-146, FAM152A, PNAS-4, PNAS4, PPPDE peptidase domain-containing protein 1

Gene ID: 51029

NCBI Accession: [NP_057160](#)

UniProt: [Q9BSY9](#)

Application Details

Application Notes: ELISA. Western blot: 1 - 2 µg/mL.
Other applications not tested.
Optimal dilutions are dependent on conditions and should be determined by the user.

Restrictions: For Research Use only

Handling

Buffer: PBS containing 0.02 % sodium azide

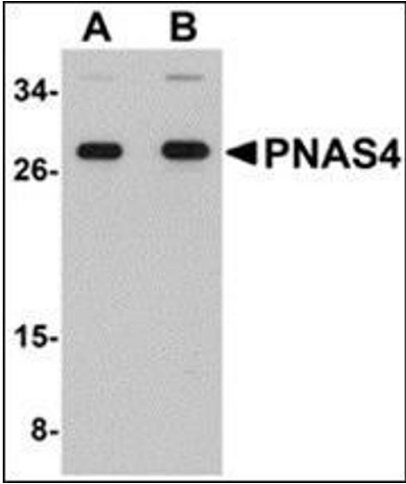
Preservative: Sodium azide

Precaution of Use: This product contains sodium azide: a POISONOUS AND HAZARDOUS SUBSTANCE which should be handled by trained staff only.

Handling Advice: Avoid repeated freezing and thawing.

Storage: 4 °C/-20 °C

Storage Comment: Store at 2 - 8 °C for up to one month or (in aliquots) at -20 °C for longer.



Western Blotting

Image 1. Western blot analysis of PNAS4 in EL4 cell lysate with this product at (A) 1 and (B) 2 µg/ml.