



Datasheet for ABIN500535
anti-CBLN1 antibody (C-Term)



[Go to Product page](#)

2 Images

Overview

Quantity:	0.1 mg
Target:	CBLN1
Binding Specificity:	C-Term
Reactivity:	Human, Rat, Mouse
Host:	Rabbit
Clonality:	Polyclonal
Conjugate:	This CBLN1 antibody is un-conjugated
Application:	Western Blotting (WB), Immunofluorescence (IF), Enzyme Immunoassay (EIA)

Product Details

Immunogen:	Precerebellin antibody was raised against a 16 amino acid peptide from near the carboxy-terminus human precerebellin.
Isotype:	IgG
Specificity:	This antibody detects Precerebellin at C-term.
Cross-Reactivity (Details):	Species reactivity (tested):Human, mouse, rat
Purification:	Peptide affinity chromatography

Target Details

Target:	CBLN1
Alternative Name:	Cerebellin-1 (CBLN1 Products)

Target Details

Background: Precerebellin is the precursor of the brain-specific hexadecapeptide cerebellin, a protein with substantial similarity to the globular region of the B chain of complement component C1q (1). Cerebellin exerts neuromodulatory functions by directly stimulating norepinephrine release via the adenylate cyclase/pka- dependent signaling pathway (2), and indirectly enhances adrenocortical secretion in vivo, through a paracrine mechanism involving medullary catecholamine release (3). The active form of precerebellin is highly enriched in postsynaptic structures of cerebellar Purkinje cells in cartwheel neurons of the dorsal cochlear nucleus (4). Because precerebellin belongs to the C1q/tumor necrosis factor superfamily of secreted proteins and has similarity to adiponectin and CTRP3, it has been suggested that precerebellin possesses functions other than those already stated (5). Synonyms: CBLN1, Precerebellin

Gene ID: 869

NCBI Accession: [NP_004343](#)

UniProt: [P23435](#)

Application Details

Application Notes: ELISA. Western blot: 2 - 4 µg/mL. Immunocytochemistry.
Other applications not tested.
Optimal dilutions are dependent on conditions and should be determined by the user.

Restrictions: For Research Use only

Handling

Buffer: PBS containing 0.02 % sodium azide

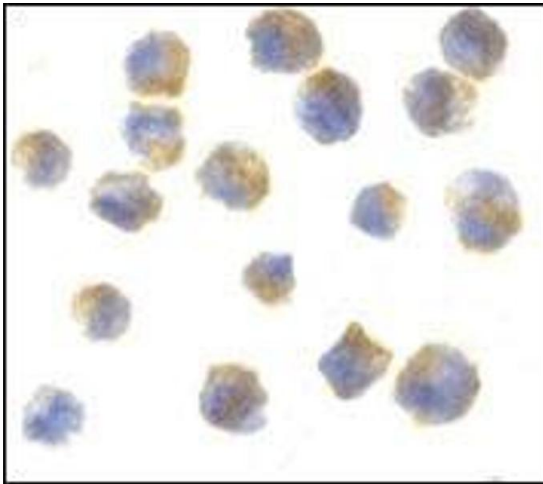
Preservative: Sodium azide

Precaution of Use: This product contains sodium azide: a POISONOUS AND HAZARDOUS SUBSTANCE which should be handled by trained staff only.

Handling Advice: Avoid repeated freezing and thawing.

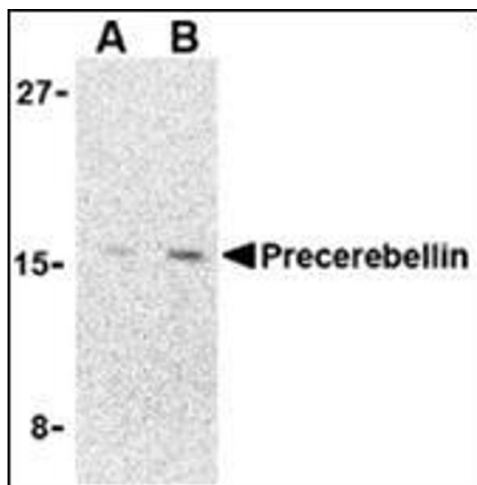
Storage: 4 °C/-20 °C

Storage Comment: Store at 2 - 8 °C for up to one month or (in aliquots) at -20 °C for longer.



Immunofluorescence

Image 1. Immunocytochemistry of precerebellin in 3T3 cells with this product at 10 $\mu\text{g/ml}$.



Western Blotting

Image 2. Western blot analysis of precerebellin in 293 cell lysate with precerebellin AP30690PU-N at (A) 2 and (B) 4 $\mu\text{g/ml}$.