

Datasheet for ABIN500581  
**anti-REEP3 antibody (C-Term)**[Go to Product page](#)

## 1 Image

## Overview

Quantity:	0.1 mg
Target:	REEP3
Binding Specificity:	C-Term
Reactivity:	Human, Rat, Mouse
Host:	Rabbit
Clonality:	Polyclonal
Conjugate:	This REEP3 antibody is un-conjugated
Application:	Western Blotting (WB), Immunohistochemistry (Paraffin-embedded Sections) (IHC (p)), Enzyme Immunoassay (EIA)

## Product Details

Immunogen:	REEP3 antibody was raised against a 17 amino acid peptide near the carboxy terminus of human REEP3.
Isotype:	IgG
Cross-Reactivity (Details):	Species reactivity (tested): Human, mouse, rat
Purification:	Peptide affinity chromatography

## Target Details

Target:	REEP3
Alternative Name:	REEP3 ( <a href="#">REEP3 Products</a> )

## Target Details

**Background:** Mammalian odorant receptors require accessory proteins such as RTP1 and RTP2 for functional cell surface expression. Receptor expression-enhancing protein (REEP) family members are transmembrane proteins which interact with odorant receptor proteins and may enhance the odorant receptor responses to odorants. Recently studies have shown other chemosensory receptors such as bitter taste receptors are also influenced by RTP and REEP family members. REEP3 has also been suggested as a novel candidate gene for autism and as a loci influencing the plasma levels of the liver enzyme alkaline phosphatase. Synonyms: C10orf74, Receptor expression-enhancing protein 3

**Gene ID:** 221035

**NCBI Accession:** [NP\\_001001330](#)

**UniProt:** [Q6NUK4](#)

## Application Details

**Application Notes:** ELISA. Western blot: 1 - 2 µg/mL. Immunohistochemistry on paraffin sections.  
Other applications not tested.  
Optimal dilutions are dependent on conditions and should be determined by the user.

**Restrictions:** For Research Use only

## Handling

**Concentration:** 1.0 mg/mL

**Buffer:** PBS containing 0.02 % sodium azide

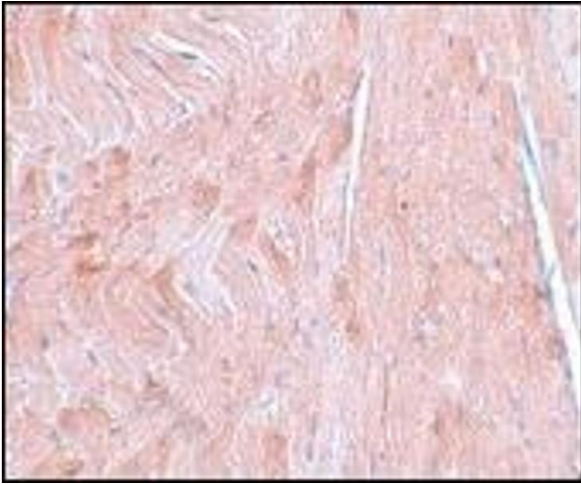
**Preservative:** Sodium azide

**Precaution of Use:** This product contains sodium azide: a POISONOUS AND HAZARDOUS SUBSTANCE which should be handled by trained staff only.

**Handling Advice:** Avoid repeated freezing and thawing.

**Storage:** -20 °C

**Storage Comment:** Store the antibody (in aliquots) at -20 °C.



#### Immunohistochemistry (Paraffin-embedded Sections)

**Image 1.** Immunohistochemistry of REEP3 in mouse heart tissue with this product at 5 µg/ml.