



[Go to Product page](#)

Datasheet for ABIN500587  
**anti-RGS21 antibody (Center)**

2 Images

Overview

Quantity:	0.1 mg
Target:	RGS21
Binding Specificity:	Center
Reactivity:	Human
Host:	Rabbit
Clonality:	Polyclonal
Conjugate:	This RGS21 antibody is un-conjugated
Application:	Western Blotting (WB), Immunohistochemistry (Paraffin-embedded Sections) (IHC (p)), Enzyme Immunoassay (EIA)

Product Details

Immunogen:	RGS21 antibody was raised against a 16 amino acid peptide near the center of Human RGS21.
Isotype:	IgG
Specificity:	This antibody detects RGS21.
Cross-Reactivity (Details):	Species reactivity (tested):Human.
Purification:	Peptide Affinity Chromatography

Target Details

Target:	RGS21
Alternative Name:	RGS21 ( <a href="#">RGS21 Products</a> )

## Target Details

---

Background:	Regulator of G-protein signaling (RGS) proteins contain an 120 amino acid conserved domain, termed the RGS domain, that acts as a GTPase-activating protein that acts to reduce the signal transmitted by the receptor-activated G-alpha subunit. RGS21 is a recently identified member of this family that has been reported to be selectively expressed in subpopulations of taste bud cells and co-expressed with bitter and sweet transduction components such as alpha-gusticin, phospholipase Cbeta2, T1R2/T1R3 sweet taste receptors and T2R bitter taste receptors. Other reports indicate that RGS21 is more widely expressed. Binding assays demonstrate that RGS21 binds alpha-gusticin in a conformation-dependent manner and may do the same with T1R receptors, suggesting that RGS21 may play a role in sweet and bitter taste transduction processes.Synonyms: Regulator of G-protein signaling 21
Gene ID:	431704
NCBI Accession:	<a href="#">NP_001034241</a>
UniProt:	<a href="#">Q2M5E4</a>
Pathways:	<a href="#">Regulation of G-Protein Coupled Receptor Protein Signaling</a>

## Application Details

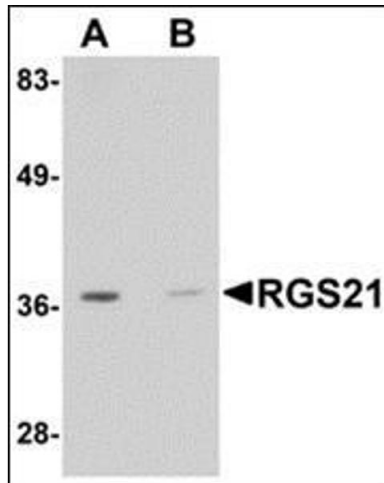
---

Application Notes:	ELISA. Western blot: 1-2 µg/mL (HepG2 cells as recommended Positive Control). Immunocytochemistry. Other applications not tested. Optimal dilutions are dependent on conditions and should be determined by the user.
Restrictions:	For Research Use only

## Handling

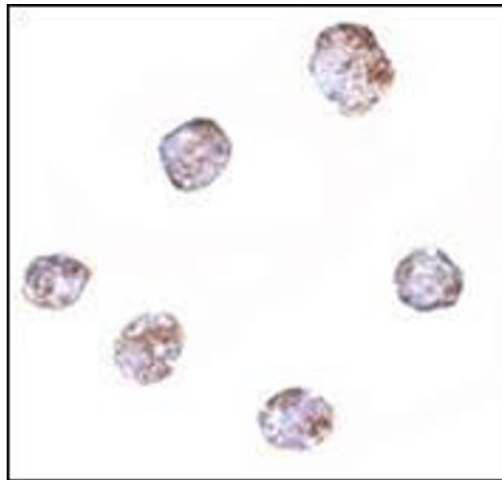
---

Concentration:	1.0 mg/mL
Buffer:	PBS containing 0.02 % Sodium Azide
Preservative:	Sodium azide
Precaution of Use:	This product contains sodium azide: a POISONOUS AND HAZARDOUS SUBSTANCE which should be handled by trained staff only.
Handling Advice:	Avoid repeated freezing and thawing.
Storage:	4 °C/-20 °C
Storage Comment:	Store the antibody undiluted at 2-8 °C for one month or (in aliquots) at -20 °C for longer.



### Western Blotting

**Image 1.** Western blot analysis: AP30716PU-N RGS21 antibody staining of HepG2 cell lysate at 0.5 µg/ml in the absence (A) and the presence of blocking peptide(B).



### Immunofluorescence

**Image 2.** Immunocytochemistry of RGS21 in HepG2 cells with this product at 2.5 µg/ml.