



[Go to Product page](#)

Datasheet for ABIN5006031
anti-Lamin B antibody

1 Image

Overview

Quantity:	100 µL
Target:	Lamin B
Reactivity:	Human
Host:	Mouse
Clonality:	Monoclonal
Conjugate:	This Lamin B antibody is un-conjugated
Application:	Western Blotting (WB)

Product Details

Immunogen:	Recombinant human Lamin B Protein
Clone:	9C11
Isotype:	IgG
Cross-Reactivity:	Human
Purification:	Purified by Protein G.

Target Details

Target:	Lamin B
Abstract:	Lamin B Products
Background:	Synonyms: Lamin-B1, LMNB1, LMN2, LMNB Background: Lamins are components of the nuclear lamina, a fibrous layer on the

Target Details

nucleoplasmic side of the inner nuclear membrane, which is thought to provide a framework for the nuclear envelope and may also interact with chromatin.

Gene ID: 4001

UniProt: [P20700](#)

Application Details

Application Notes: WB 1:300-5000

Restrictions: For Research Use only

Handling

Format: Liquid

Concentration: 1 µg/µL

Buffer: 0.01M TBS(pH 7.4) with 1 % BSA, 0.02 % Proclin300 and 50 % Glycerol.

Preservative: ProClin

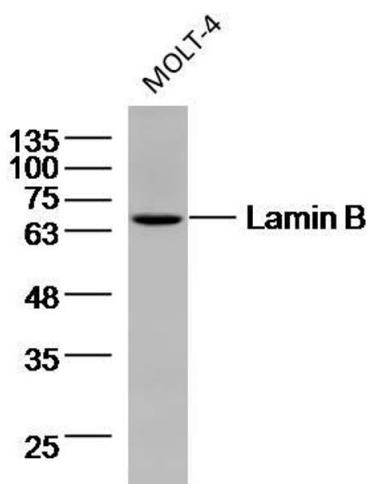
Precaution of Use: This product contains ProClin: a POISONOUS AND HAZARDOUS SUBSTANCE, which should be handled by trained staff only.

Storage: 4 °C,-20 °C

Storage Comment: Shipped at 4°C. Store at -20°C for one year. Avoid repeated freeze/thaw cycles.

Expiry Date: 12 months

Images



Western Blotting

Image 1. MOLT-4 cell lysates probed with Lamin B (9C11) Monoclonal Antibody, unconjugated (bsm-33040M) at 1:300 overnight at 4°C followed by a conjugated secondary antibody for 60 minutes at 37°C.