

Datasheet for ABIN500608
anti-RIMS2 antibody (Center)

2 Images

[Go to Product page](#)

Overview

Quantity:	0.1 mg
Target:	RIMS2
Binding Specificity:	Center
Reactivity:	Human, Rat, Mouse
Host:	Rabbit
Clonality:	Polyclonal
Conjugate:	This RIMS2 antibody is un-conjugated
Application:	Western Blotting (WB), Immunohistochemistry (Paraffin-embedded Sections) (IHC (p)), Enzyme Immunoassay (EIA)

Product Details

Immunogen:	Rim2 antibody was raised against a 17 amino acid peptide near the center of the human Rim2.
Isotype:	IgG
Specificity:	This antibody detects Rim2. Rim2 is known to exist in multiple isoforms, this antibody should recognize most of them. It is predicted to have no cross-reactivity to other Rim proteins.
Cross-Reactivity (Details):	Species reactivity (tested): Human, mouse, rat
Purification:	Peptide affinity chromatography

Target Details

Target:	RIMS2
---------	-------

Target Details

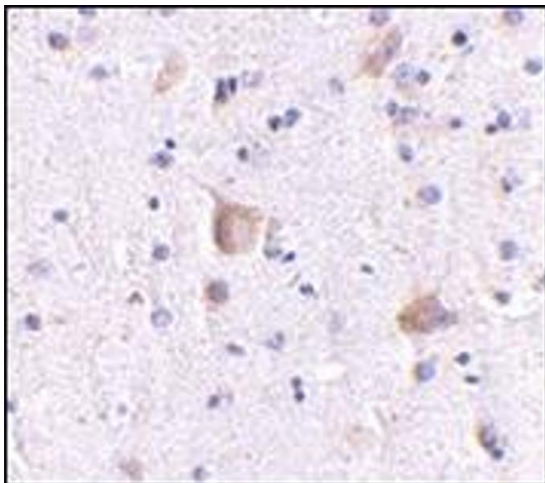
Alternative Name:	RIMS2 (RIMS2 Products)
Background:	Rab3-interacting molecules (RIMs) are synaptic proteins necessary for neuronal transmission and plasticity. Rim1 and Rim2 proteins are expressed in overlapping but distinct patterns throughout the brain. While the ablation of either gene was not lethal in mice, the deletion of both resulted in postnatal mortality. This lethality is due to a defect in neurotransmitter release, synapses without RIM proteins can still release neurotransmitters but are unable to do so in response to normal Ca ²⁺ triggers. Like Rim1, Rim 2 is thought to be an effector protein for Rab3, binding to Rab3 on synaptic vesicles in a GTP-dependent manner. Synonyms: KIAA0751, RAB3IP3, RIM 2, RIM2, Rab-3-interacting molecule 2, Rab-3-interacting protein 3, Regulating synaptic membrane exocytosis protein 2
Gene ID:	9699
NCBI Accession:	NP_001093587
UniProt:	Q9UQ26
Pathways:	Hormone Transport , Synaptic Vesicle Exocytosis

Application Details

Application Notes:	ELISA. Western blot: 0.5 - 1 µg/mL. Immunohistochemistry on paraffin sections. Other applications not tested. Optimal dilutions are dependent on conditions and should be determined by the user.
Restrictions:	For Research Use only

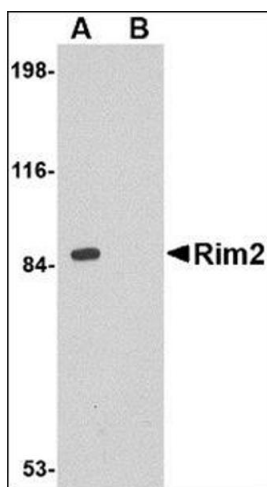
Handling

Buffer:	PBS containing 0.02 % sodium azide
Preservative:	Sodium azide
Precaution of Use:	This product contains sodium azide: a POISONOUS AND HAZARDOUS SUBSTANCE which should be handled by trained staff only.
Handling Advice:	Avoid repeated freezing and thawing.
Storage:	4 °C/-20 °C
Storage Comment:	Store at 2 - 8 °C for up to one month or (in aliquots) at -20 °C for longer.



Immunohistochemistry (Paraffin-embedded Sections)

Image 1. Immunohistochemistry of Rim2 in human brain with this product at 5 µg/ml.



Western Blotting

Image 2. Western blot analysis of Rim2 in rat brain tissue lysate with this product at 1 µg/ml in the (A) absence or (B) presence of blocking peptide.