

Datasheet for ABIN500618
anti-MEX3C antibody (C-Term)[Go to Product page](#)[1 Image](#)[1 Publication](#)

Overview

Quantity:	0.1 mg
Target:	MEX3C
Binding Specificity:	C-Term
Reactivity:	Human, Mouse, Rat
Host:	Rabbit
Clonality:	Polyclonal
Conjugate:	This MEX3C antibody is un-conjugated
Application:	Western Blotting (WB), Enzyme Immunoassay (EIA)

Product Details

Immunogen:	Rkhd2 antibody was raised against a 15 amino acid peptide from near the carboxy terminus of human RKHD2.
Isotype:	IgG
Specificity:	This antibody detects Rkhd2.
Cross-Reactivity (Details):	Species reactivity (tested): Human, mouse, rat
Purification:	Peptide affinity chromatography

Target Details

Target:	MEX3C
Alternative Name:	MEX3C / RKHD2 (MEX3C Products)

Target Details

Background: Rkhd2, also known as MEX3C is a member of a novel family of four homologous human MEX3 proteins each containing two heterogeneous nuclear ribonucleoprotein K homology (KH) domains and one carboxy-terminal RING finger module. MEX3 proteins, including Rkhd2, are phosphoproteins that bind RNA through their KH domains and shuttle between the nucleus and the cytoplasm via the CRM1 export pathway. These proteins are a novel family of evolutionarily conserved RNA-binding proteins, differentially recruited to P bodies and potentially involved in post-transcriptional regulatory mechanisms. It has been suggested that genetic variations in Rkhd2 may be associated with susceptibility to essential hypertension type 8. Rkhd3 and Rkhd4, but not Rkhd2, co-localize with both the hDcp1a decapping factor and Argonaute (Ago) proteins in processing bodies (P bodies), recently characterized as centers of mRNA turnover. Synonyms: RING finger and KH domain-containing protein 2, RING finger protein 194, RNA-binding protein MEX3C, RNF194

Gene ID: 51320

NCBI Accession: [NP_057710](#)

UniProt: [Q5U5Q3](#)

Application Details

Application Notes: ELISA. Western blot.
Other applications not tested.
Optimal dilutions are dependent on conditions and should be determined by the user.

Restrictions: For Research Use only

Handling

Buffer: PBS containing 0.02 % sodium azide

Preservative: Sodium azide

Precaution of Use: This product contains sodium azide: a POISONOUS AND HAZARDOUS SUBSTANCE which should be handled by trained staff only.

Handling Advice: Avoid repeated freezing and thawing.

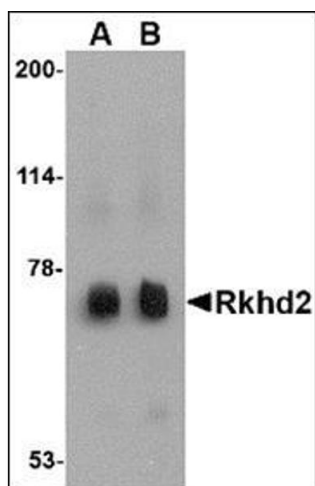
Storage: 4 °C/-20 °C

Storage Comment: Store at 2 - 8 °C for up to one month or (in aliquots) at -20 °C for longer.

Publications

Product cited in: Gong, Tsai, Yan, Rubin: "Cooperation between MEF2 and PPARgamma in human intestinal beta,beta-carotene 15,15'-monooxygenase gene expression." in: **BMC molecular biology**, Vol. 7, pp. 7, (2006) ([PubMed](#)).

Images



Western Blotting

Image 1. Western blot analysis of Rkhd2 in rat heart tissue lysate with this product at (A) 0.5 µg/ml and (B) 1 µg/ml.