



[Go to Product page](#)

Datasheet for ABIN500628
anti-CD180 antibody (N-Term)

2 Images

Overview

Quantity:	0.1 mg
Target:	CD180
Binding Specificity:	N-Term
Reactivity:	Human
Host:	Rabbit
Clonality:	Polyclonal
Conjugate:	This CD180 antibody is un-conjugated
Application:	Western Blotting (WB), Immunohistochemistry (Paraffin-embedded Sections) (IHC (p)), Enzyme Immunoassay (EIA)

Product Details

Immunogen:	RP105 antibody was raised against a 11 amino acid peptide from near the amino terminus of human RP105.
Isotype:	IgG
Specificity:	This antibody detects CD180 / RP105 at N-term.
Cross-Reactivity (Details):	Species reactivity (tested):Human
Purification:	Peptide affinity chromatography

Target Details

Target:	CD180
---------	-------

Target Details

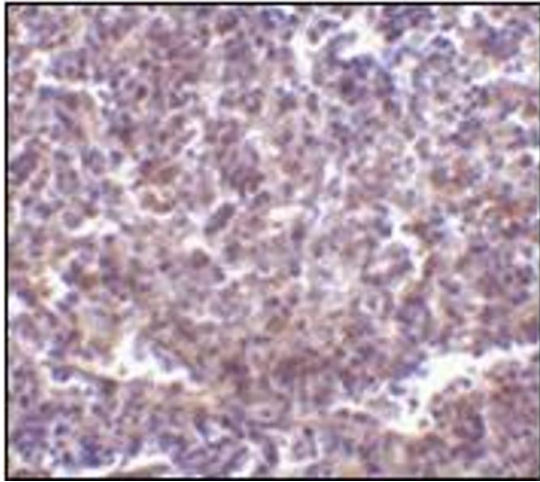
Alternative Name:	CD180 / RP105 (CD180 Products)
Background:	<p>Toll-like receptors (TLRs) are evolutionarily conserved pattern-recognition molecules resembling the toll proteins that mediate antimicrobial responses in <i>Drosophila</i>. These proteins recognize different microbial products during infection and serve as an important link between the innate and adaptive immune responses. The signaling of these TLRs is kept under tight control by the expression of endogenous inhibiting proteins. One such protein is RP105, a recently identified homolog to TLR4 that, with MD-1, interacts with and inhibits the TLR4/MD-2 signaling pathway. It has also been suggested that the RP105/MD-1 complex influences antibody production mediated by both TLR4/MD-2 and TLR2 receptor complexes. Despite its predicted molecular weight, RP105 often migrates at 95 - 105 kDa. Synonyms: LY64, Lymphocyte antigen 64, Radioprotective 105 kDa protein</p>
Gene ID:	4064
UniProt:	Q99467
Pathways:	Cellular Response to Molecule of Bacterial Origin , Toll-Like Receptors Cascades

Application Details

Application Notes:	<p>ELISA. Western blot: 0.5 - 1 µg/mL. Immunohistochemistry on paraffin sections.</p> <p>Other applications not tested.</p> <p>Optimal dilutions are dependent on conditions and should be determined by the user.</p>
Restrictions:	For Research Use only

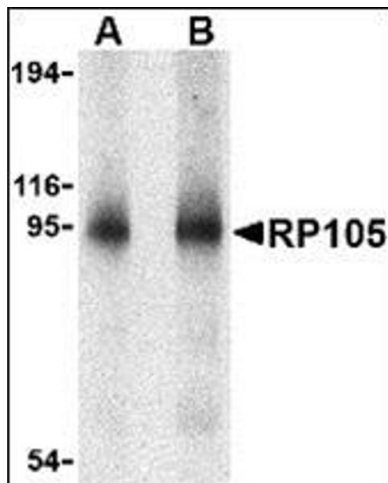
Handling

Buffer:	PBS containing 0.02 % sodium azide
Preservative:	Sodium azide
Precaution of Use:	This product contains sodium azide: a POISONOUS AND HAZARDOUS SUBSTANCE which should be handled by trained staff only.
Handling Advice:	Avoid repeated freezing and thawing.
Storage:	4 °C/-20 °C
Storage Comment:	Store at 2 - 8 °C for up to one month or (in aliquots) at -20 °C for longer.



Immunohistochemistry (Paraffin-embedded Sections)

Image 1. Immunohistochemistry of RP105 in human spleen tissue with this product at 2 $\mu\text{g/ml}$.



Western Blotting

Image 2. Western blot analysis of RP105 in human spleen tissue lysate with this product at (A) 0.5 and (B) 1 $\mu\text{g/ml}$.