



Datasheet for ABIN500706
anti-SHoc2/Sur8 antibody (N-Term)



[Go to Product page](#)

2 Images

Overview

Quantity:	0.1 mg
Target:	SHoc2/Sur8 (SHOC2)
Binding Specificity:	N-Term
Reactivity:	Human, Mouse, Rat
Host:	Rabbit
Clonality:	Polyclonal
Conjugate:	This SHoc2/Sur8 antibody is un-conjugated
Application:	Western Blotting (WB), Immunohistochemistry (Paraffin-embedded Sections) (IHC (p)), Enzyme Immunoassay (EIA)

Product Details

Immunogen:	SHOC2 antibody was raised against a 21 amino acid peptide near the amino terminus of human SHOC2.
Isotype:	IgG
Specificity:	This antibody detects SHOC2.
Cross-Reactivity (Details):	Species reactivity (tested):Human, mouse, rat
Purification:	Peptide affinity chromatography

Target Details

Target:	SHoc2/Sur8 (SHOC2)
---------	--------------------

Target Details

Alternative Name: SHOC2 ([SHOC2 Products](#))

Background: SHOC2 protein participates in protein binding / transferase activity in the fibroblast growth factor receptor signaling pathway and Ras protein signal transduction. It is a widely expressed protein composed almost entirely of leucine-rich repeats (LRR), with a lysine-rich sequence at the amino terminus and cytoplasmically localized. SHOC2 acts as a positive modulator of the RAS-MAPK signaling cascade, which is elicited by EGL-15 and LET-23 and mediated by LET-60. SHOC2 together with protein phosphatase 1c (PP1c) forms a highly specific M-Ras effector complex and is essential for activation of the MAPK pathway by growth factors. Furthermore, in tumor cells with Ras gene mutations, inhibition of SHOC2 expression inhibits MAPK, but not PI3K activity. The SHOC2-PP1c holoenzyme provides an attractive therapeutic target for inhibition of the MAPK pathway in cancer. Recent studies show that aberrantly acquired N-myristoylation of SHOC2 causes human disease Noonan-like syndrome with loose anagen hair. Synonyms: KIAA0862, Leucine-rich repeat protein SHOC-2, Protein soc-2 homolog, Protein sur-8 homolog, SHOC-2, SOC2, SUR8

Gene ID: 8036

NCBI Accession: [NP_031399](#)

UniProt: [Q9UQ13](#)

Application Details

Application Notes: ELISA. Western blot: 1-2 µg/mL. Immunohistochemistry on paraffin sections.
Other applications not tested.
Optimal dilutions are dependent on conditions and should be determined by the user.

Restrictions: For Research Use only

Handling

Concentration: 1.0 mg/mL

Buffer: PBS containing 0.02 % sodium azide

Preservative: Sodium azide

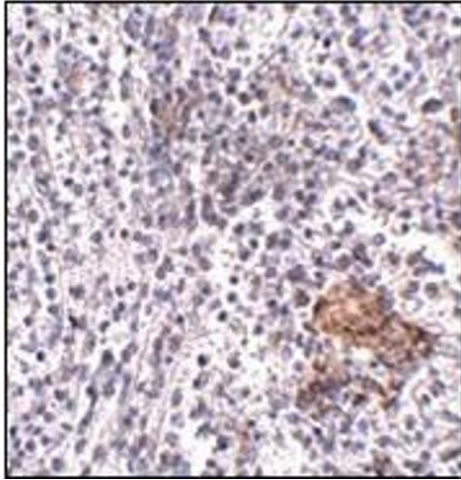
Precaution of Use: This product contains sodium azide: a POISONOUS AND HAZARDOUS SUBSTANCE which should be handled by trained staff only.

Storage: 4 °C

Handling

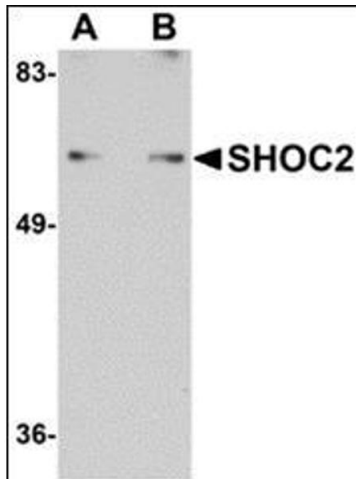
Storage Comment: Store the antibody undiluted at 2-8 °C.

Images



Immunohistochemistry (Paraffin-embedded Sections)

Image 1. Immunohistochemistry of SHOC2 in human spleen tissue with this product at 5 µg/ml.



Western Blotting

Image 2. Western blot analysis of SHOC2 in Jurkat cell lysate with this product at (A) 1 and (B) 2 µg/ml.