

Datasheet for ABIN500714
anti-SIGLEC11 antibody (C-Term)[Go to Product page](#)

2 Images

Overview

Quantity:	0.1 mg
Target:	SIGLEC11
Binding Specificity:	C-Term
Reactivity:	Human
Host:	Rabbit
Clonality:	Polyclonal
Application:	Western Blotting (WB), Immunohistochemistry (Paraffin-embedded Sections) (IHC (p)), Enzyme Immunoassay (EIA)

Product Details

Immunogen:	Siglec11 antibody was raised against an 18 amino acid peptide from near the carboxy terminus of human Siglec11.
Isotype:	IgG
Specificity:	This antibody detects Siglec11. It will not cross-react with Siglec10. Despite its predicted size, Siglec11 migrates at a higher than expected molecular weight in SDS-PAGE.
Cross-Reactivity (Details):	Species reactivity (tested):Human
Purification:	Peptide affinity chromatography

Target Details

Target:	SIGLEC11
Alternative Name:	SIGLEC11 (SIGLEC11 Products)

Target Details

Background: Siglecs are sialic acid-binding lectins of the immunoglobulin superfamily that are mainly expressed in cells of the hematopoietic system. Siglec11 is unlike other siglecs in that it binds specifically to $\alpha 2$ -8-linked sialic acids and is not found in peripheral blood leukocytes but instead on macrophages of various tissues. Siglec11 is highly homologous to Siglec10 over their extracellular domain but not over their cytoplasmic domain, suggesting that Siglec11 arose through gene duplication followed by a recombination event involving another ancestral siglec gene. Following treatment of Siglec11-transfected cells with pervanadate, Siglec11 becomes tyrosine-phosphorylated and strongly associates with SHP-1 and SHP-2. At least five isoforms of Siglec11 are known to exist. Synonyms: SIGLEC-11, Sialic acid-binding Ig-like lectin 11, Sialic acid-binding lectin 11, UNQ9222/PRO28718

Gene ID: 114132

NCBI Accession: [NP_443116](#)

UniProt: [Q96RL6](#)

Application Details

Application Notes: ELISA. Western blot: 0.5 - 1 μ g/mL. Immunohistochemistry on paraffin sections.
Other applications not tested.
Optimal dilutions are dependent on conditions and should be determined by the user.

Restrictions: For Research Use only

Handling

Buffer: PBS containing 0.02 % sodium azide

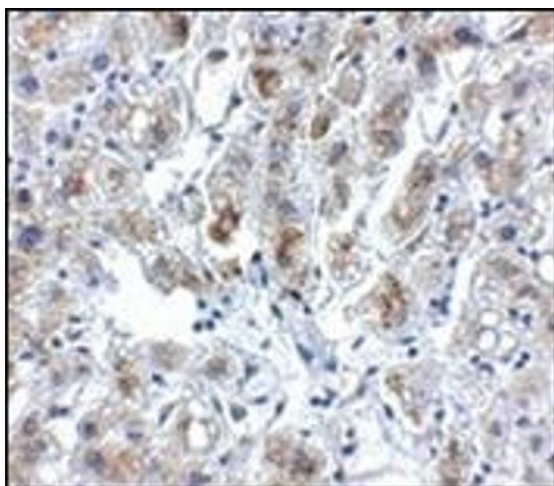
Preservative: Sodium azide

Precaution of Use: This product contains sodium azide: a POISONOUS AND HAZARDOUS SUBSTANCE which should be handled by trained staff only.

Handling Advice: Avoid repeated freezing and thawing.

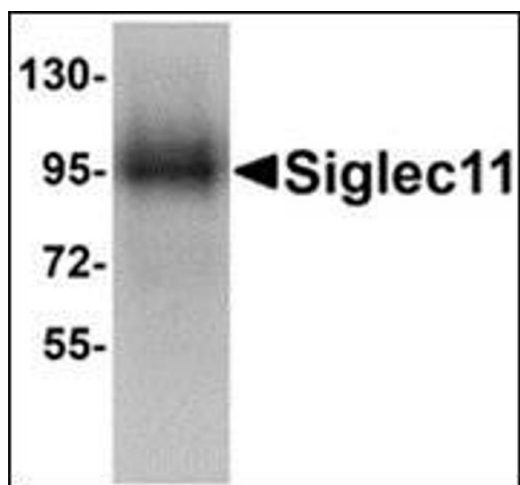
Storage: 4 °C/-20 °C

Storage Comment: Store at 2 - 8 °C for up to one month or (in aliquots) at -20 °C for longer.



Immunohistochemistry (Paraffin-embedded Sections)

Image 1. Immunohistochemistry of Siglec11 in human liver tissue with this product at 5 µg/ml.



Western Blotting

Image 2. Western blot analysis of Siglec11 in HepG2 cell lysate with this product at 1 µg/ml.