



[Go to Product page](#)

Datasheet for ABIN500716

anti-SIPA1L1 antibody (N-Term)

1 Image

Overview

Quantity:	0.1 mg
Target:	SIPA1L1
Binding Specificity:	N-Term
Reactivity:	Human, Mouse, Rat
Host:	Rabbit
Clonality:	Polyclonal
Conjugate:	This SIPA1L1 antibody is un-conjugated
Application:	Western Blotting (WB), Immunohistochemistry (Paraffin-embedded Sections) (IHC (p)), Enzyme Immunoassay (EIA)

Product Details

Immunogen:	SIPA1L1 antibody was raised against a 16 amino acid peptide from near the amino terminus of human SIPA1L1.
Isotype:	IgG
Cross-Reactivity (Details):	Species reactivity (tested):Human, mouse, rat
Purification:	Peptide affinity chromatography

Target Details

Target:	SIPA1L1
Alternative Name:	SIPA1L1 (SIPA1L1 Products)

Target Details

Background: Signal-induced proliferation associated-like protein 1 (SIPA1L1) is a member of the SIPA1 family of RapGAPs. SIPA1L1 was initially identified as a binding partner and degradation target of the E6 oncoprotein of high-risk papillomaviruses. Recently, it was discovered that Casein kinase I epsilon (CKIε), a Wnt-regulated kinase that regulates Wnt/b-catenin signaling, also can bind to the carboxy-terminus of SIPA1L1. CKIε phosphorylates SIPA1L1, thereby reducing its stability and alleviating its inhibition of Rap1, a protein required for Wnt8/CKIε-mediated gastrulation during embryogenesis, suggesting SIPA1L1 plays important roles in embryo development as well as control of cell proliferation. Synonyms: E6-targeted protein 1, E6TP1, KIAA0440, SIPA1-like protein 1, Signal-induced proliferation-associated 1-like protein 1

Gene ID: 26037

NCBI Accession: [NP_056371](#)

UniProt: [O43166](#)

Application Details

Application Notes: ELISA. Western blot: 0.5 - 1 µg/mL. Immunohistochemistry on paraffin sections.
Other applications not tested.
Optimal dilutions are dependent on conditions and should be determined by the user.

Restrictions: For Research Use only

Handling

Concentration: 1.0 mg/mL

Buffer: PBS containing 0.02 % sodium azide

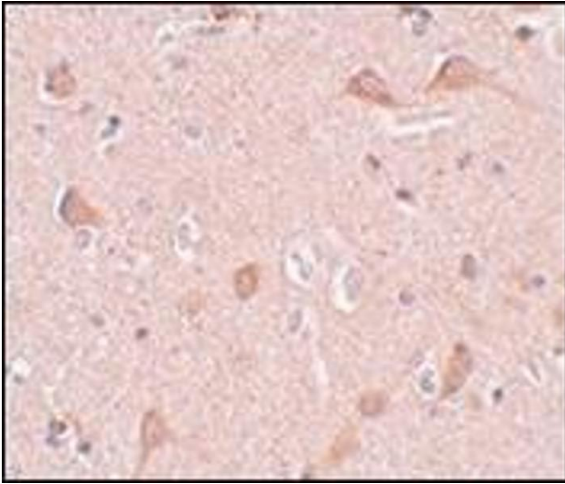
Preservative: Sodium azide

Precaution of Use: This product contains sodium azide: a POISONOUS AND HAZARDOUS SUBSTANCE which should be handled by trained staff only.

Handling Advice: Avoid repeated freezing and thawing.

Storage: -20 °C

Storage Comment: Store the antibody (in aliquots) at -20 °C.



Immunohistochemistry (Paraffin-embedded Sections)

Image 1. Immunohistochemistry of SIPA1L1 in human brain tissue with this product at 5 µg/ml.