

Datasheet for ABIN500742
anti-SLC35D1 antibody (N-Term)[Go to Product page](#)

1 Image

Overview

Quantity:	0.1 mg
Target:	SLC35D1
Binding Specificity:	N-Term
Reactivity:	Human, Mouse, Rat
Host:	Rabbit
Clonality:	Polyclonal
Conjugate:	This SLC35D1 antibody is un-conjugated
Application:	Western Blotting (WB), Enzyme Immunoassay (EIA)

Product Details

Immunogen:	Slc35D1 antibody was raised against a 14 amino acid peptide near the amino terminus of the human Slc35D1.
Isotype:	IgG
Specificity:	This antibody detects SLC35D1 / UGTREL7 at N-term. It is predicted to not cross-react with the highly homologous Slc35D2.
Cross-Reactivity (Details):	Species reactivity (tested): Human, mouse, rat
Purification:	Peptide affinity chromatography

Target Details

Target:	SLC35D1
---------	---------

Target Details

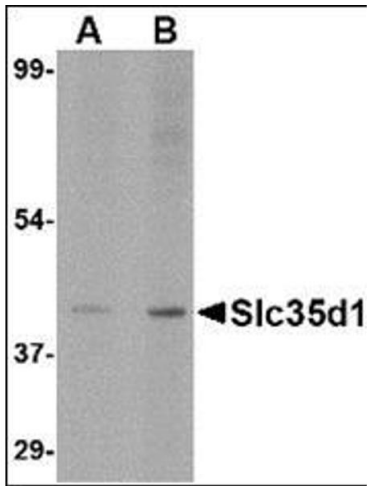
Alternative Name:	SLC35D1 / UGTREL7 (SLC35D1 Products)
Background:	<p>The solute carrier family Slc35 consists of at least 17 proteins that act as nucleotide sugar transporters localized to the Golgi apparatus and endoplasmic reticulum. The role of the ER-resident Slc family member Slc35D1 is to transport both UDP-glucuronic acid and UDP-N-acetylgalactosamine. These molecules can serve as substrates for chondroitin sulfate biosynthesis and mice lacking the Slc35D1 gene developed a lethal form of skeletal dysplasia with severe shortening of limbs and facial structures. Examination of epiphyseal cartilage in these mice revealed a decreased proliferating zone with round chondrocytes, scarce matrices, and reduced proteoglycan aggregates. Loss of function mutations in human Slc35D1 cause Schneckenbecken dysplasia, a severe skeletal dysplasia. Synonyms: KIAA0260, Solute carrier family 35 member D1, UDP-galactose transporter-related protein 7, UDP-glucuronic acid/UDP-N-acetylgalactosamine transporter, UGTrel7</p>
Gene ID:	23169
NCBI Accession:	NP_055954
UniProt:	Q9NTN3
Pathways:	Glycosaminoglycan Metabolic Process

Application Details

Application Notes:	<p>ELISA. Western blot: 1 - 2 µg/mL.</p> <p>Other applications not tested.</p> <p>Optimal dilutions are dependent on conditions and should be determined by the user.</p>
Restrictions:	For Research Use only

Handling

Buffer:	PBS containing 0.02 % sodium azide
Preservative:	Sodium azide
Precaution of Use:	This product contains sodium azide: a POISONOUS AND HAZARDOUS SUBSTANCE which should be handled by trained staff only.
Handling Advice:	Avoid repeated freezing and thawing.
Storage:	4 °C/-20 °C
Storage Comment:	Store at 2 - 8 °C for up to one month or (in aliquots) at -20 °C for longer.



Western Blotting

Image 1. Western blot analysis of Slc35D1 in A-20 lysate with this product at (A) 1 and (B) 2 µg/ml.