

Datasheet for ABIN500778
anti-SLUG antibody (Center)



[Go to Product page](#)

1 Image

Overview

Quantity:	0.1 mg
Target:	SLUG (SNAI2)
Binding Specificity:	Center
Reactivity:	Human, Mouse
Host:	Rabbit
Clonality:	Polyclonal
Conjugate:	This SLUG antibody is un-conjugated
Application:	Western Blotting (WB), Enzyme Immunoassay (EIA)

Product Details

Immunogen:	Slug antibody was raised against a 14 amino acid peptide from near the center of human Slug.
Isotype:	IgG
Specificity:	This antibody detects SNAI2 / SLUG at center. It has no cross-reactivity to Snail protein.
Cross-Reactivity (Details):	Species reactivity (tested): Human, mouse
Purification:	Peptide affinity chromatography

Target Details

Target:	SLUG (SNAI2)
Alternative Name:	SNAI2 / SLUG (SNAI2 Products)
Background:	Slug, a member of the Snail family of C2H2-type zinc finger transcription factors, was initially

Target Details

identified to be involved in epithelial-mesenchymal transitions as well as the formation of the neural tube during vertebrate embryogenesis. Like Snail, Slug transcription can be induced by growth factors such as FGF, BMP, and TGF-beta. Once expressed, Slug will bind E-box regions of promoters and repress transcription of genes such as E-cadherin and Claudin-1. More recently, its expression in breast, esophageal, and colorectal carcinomas has been correlated with poor prognosis for survival. Furthermore, Slug can protect hemapoietic progenitor cells from radiation-induced apoptosis by repressing the p53-mediated transcription of Puma, a BH3-only antagonist of the anti-apoptotic members of the Bcl-2 family. Synonyms: Neural crest transcription factor Slug, Protein snail homolog 2, SLUGH, Zinc finger protein SNAI2

Gene ID: 6591

UniProt: [O43623](#)

Application Details

Application Notes: ELISA. Western blot: 1 to 2 µg/mL.
Other applications not tested.
Optimal dilutions are dependent on conditions and should be determined by the user.

Restrictions: For Research Use only

Handling

Buffer: PBS containing 0.02 % sodium azide

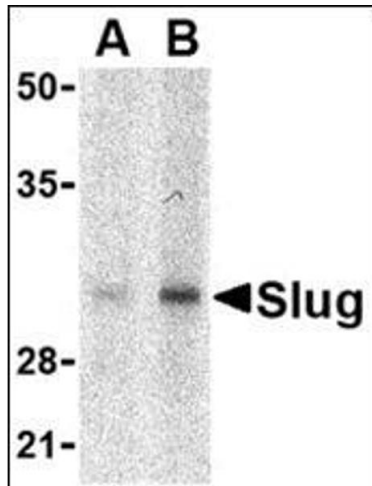
Preservative: Sodium azide

Precaution of Use: This product contains sodium azide: a POISONOUS AND HAZARDOUS SUBSTANCE which should be handled by trained staff only.

Handling Advice: Avoid repeated freezing and thawing.

Storage: 4 °C/-20 °C

Storage Comment: Store at 2 - 8 °C for up to one month or (in aliquots) at -20 °C for longer.



Western Blotting

Image 1. Western blot analysis of Slug in human kidney cell lysate with this product at in (A) 1 and (B) 2 $\mu\text{g}/\text{ml}$.