

Datasheet for ABIN500821
anti-STEAP2 antibody (C-Term)

3 Images

[Go to Product page](#)

Overview

Quantity:	0.1 mg
Target:	STEAP2
Binding Specificity:	C-Term
Reactivity:	Human, Mouse
Host:	Rabbit
Clonality:	Polyclonal
Conjugate:	This STEAP2 antibody is un-conjugated
Application:	Western Blotting (WB), Immunohistochemistry (Paraffin-embedded Sections) (IHC (p)), Enzyme Immunoassay (EIA)

Product Details

Immunogen:	STEAP2 antibody was raised against a 16 amino acid peptide from near the carboxy terminus of human STEAP2.
Isotype:	IgG
Specificity:	This antibody detects STEAP2 / STAMP1. It does not cross-react with other STEAP proteins.
Purification:	Peptide affinity chromatography

Target Details

Target:	STEAP2
Alternative Name:	STEAP2 / STAMP1 (STEAP2 Products)

Target Details

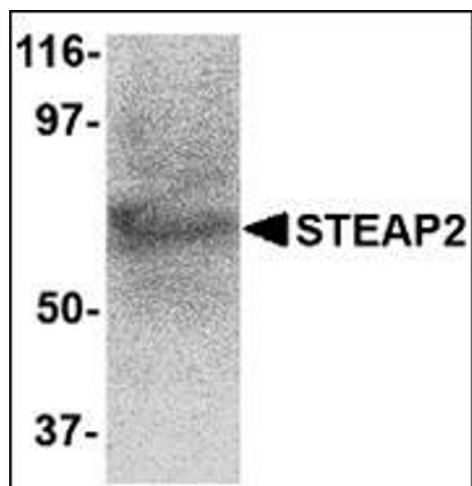
Background:	The six-transmembrane epithelial antigen of prostate 2 (STEAP2) is a member of a family of metalloreductases identified as cell-surface antigens in prostate tissue. Similar to two other members of the STEAP family (STEAP 3 and STEAP4), STEAP2 promotes both iron and copper reduction. STEAP2 expression in transfected cells also correlated with iron or copper uptake, suggesting that the STEAP family of proteins may function to stimulate iron and copper uptake. STEAP2 is widely expressed in many tissues in the plasma membrane, but is most highly expressed in prostate. At least three isoforms of STEAP2 are known to exist. Synonyms: IPCA-1, IPCA1, Metalloreductase STEAP2, PCANAP1, PUMPCn, Prostate cancer-associated protein 1, Protein upregulated in metastatic prostate cancer, STEAP-2, STMP, Six-transmembrane epithelial antigen of prostate 2, SixTransMembrane protein of prostate 1
Gene ID:	261729
UniProt:	Q8NFT2
Pathways:	Transition Metal Ion Homeostasis

Application Details

Application Notes:	ELISA. Western blot: 1 - 2 µg/mL. Immunohistochemistry on paraffin sections. Other applications not tested. Optimal dilutions are dependent on conditions and should be determined by the user.
Restrictions:	For Research Use only

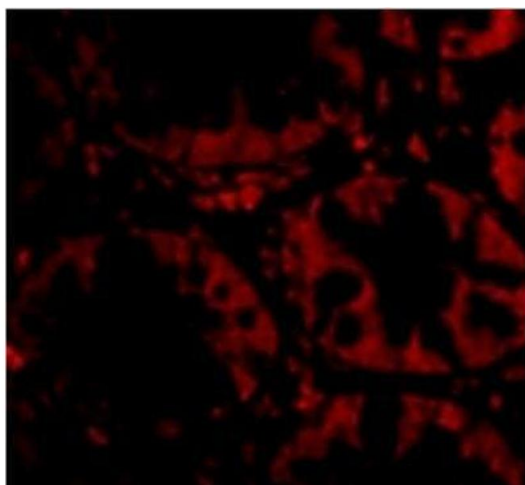
Handling

Concentration:	1,0 mg/mL
Buffer:	PBS containing 0.02 % sodium azide
Preservative:	Sodium azide
Precaution of Use:	This product contains sodium azide: a POISONOUS AND HAZARDOUS SUBSTANCE which should be handled by trained staff only.
Handling Advice:	Avoid repeated freezing and thawing.
Storage:	4 °C/-20 °C
Storage Comment:	Store at 2 - 8 °C for up to one month or (in aliquots) at -20 °C for longer.



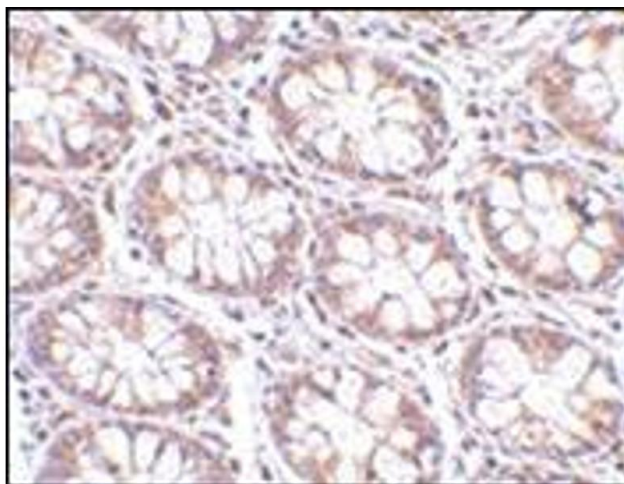
Western Blotting

Image 1. Western blot analysis of STEAP2 in human prostate tissue lysate with this product at 1 µg/ml.



Immunofluorescence

Image 2. Immunofluorescence of STEAP2 in Human Colon cells with STEAP2 Antibody at 20 µg/ml.



Immunohistochemistry (Paraffin-embedded Sections)

Image 3. Immunohistochemistry of STEAP2 in human colon tissue with this product at 2.5 µg/ml.