

Datasheet for ABIN500823  
**anti-STEAP3 antibody (N-Term)**[Go to Product page](#)

## 2 Images

## Overview

Quantity:	0.1 mg
Target:	STEAP3
Binding Specificity:	N-Term
Reactivity:	Human, Mouse, Rat
Host:	Rabbit
Clonality:	Polyclonal
Conjugate:	This STEAP3 antibody is un-conjugated
Application:	Western Blotting (WB), Immunohistochemistry (Paraffin-embedded Sections) (IHC (p)), Enzyme Immunoassay (EIA)

## Product Details

Immunogen:	STEAP3 antibody was raised against a 15 amino acid peptide from near the amino terminus of human STEAP3.
Isotype:	IgG
Specificity:	This antibody detects STEAP3 / TSAP6. It does not cross-react with other STEAP proteins.
Cross-Reactivity (Details):	Species reactivity (tested): Human, mouse, rat
Purification:	Peptide affinity chromatography

## Target Details

Target:	STEAP3
---------	--------

## Target Details

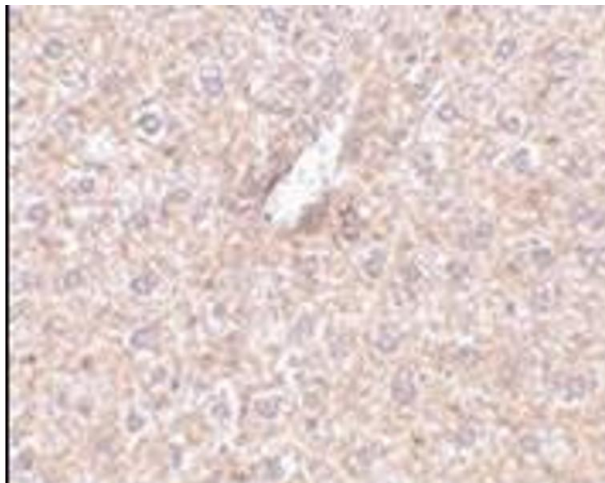
Alternative Name:	STEAP3 / TSAP6 ( <a href="#">STEAP3 Products</a> )
Background:	<p>The six-transmembrane epithelial antigen of prostate 3 (STEAP3) is a member of a family of metalloreductases identified as cell-surface antigens in prostate tissue. Similar to two other members of the STEAP family (STEAP 2 and STEAP4), STEAP3 promotes both iron and copper reduction. STEAP3 is highly expressed in hematopoietic tissues and colocalizes with the transferrin endosome. Overexpression of STEAP3 stimulates iron reduction, mice lacking STEAP3 are deficient in erythroid ferrireductase activity, suggesting that STEAP3 is an endosomal ferrireductase required for transferrin-dependent iron uptake in erythroid cells. Synonyms: Dudulin-2, Metalloreductase STEAP3, STEAP-3, Six-transmembrane epithelial antigen of prostate 3, Tumor suppressor-activated pathway protein 6, pH yde</p>
Gene ID:	55240
Pathways:	<a href="#">Transition Metal Ion Homeostasis</a>

## Application Details

Application Notes:	<p>ELISA. Western blot: 1 - 2 µg/mL. Immunohistochemistry on paraffin sections.</p> <p>Other applications not tested.</p> <p>Optimal dilutions are dependent on conditions and should be determined by the user.</p>
Restrictions:	For Research Use only

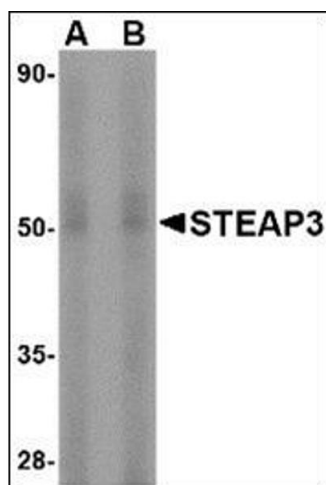
## Handling

Buffer:	PBS containing 0.02 % sodium azide
Preservative:	Sodium azide
Precaution of Use:	This product contains sodium azide: a POISONOUS AND HAZARDOUS SUBSTANCE which should be handled by trained staff only.
Handling Advice:	Avoid repeated freezing and thawing.
Storage:	4 °C/-20 °C
Storage Comment:	Store at 2 - 8 °C for up to one month or (in aliquots) at -20 °C for longer.



#### Immunohistochemistry (Paraffin-embedded Sections)

**Image 1.** Immunohistochemistry of STEAP3 in mouse liver tissue with this product at 2.5 µg/ml.



#### Western Blotting

**Image 2.** Western blot analysis of STEAP3 in rat liver tissue lysate with this product at (A) 1 and (B) 2 µg/ml.