

Datasheet for ABIN500857
anti-SYPL2 antibody (C-Term)[Go to Product page](#)

2 Images

Overview

Quantity:	0.1 mg
Target:	SYPL2
Binding Specificity:	C-Term
Reactivity:	Human, Mouse, Rat
Host:	Rabbit
Clonality:	Polyclonal
Conjugate:	This SYPL2 antibody is un-conjugated
Application:	Western Blotting (WB), Immunohistochemistry (Paraffin-embedded Sections) (IHC (p)), Enzyme Immunoassay (EIA)

Product Details

Immunogen:	SYPL2 antibody was raised against a 15 amino acid peptide near the carboxy terminus of human SYPL.
Isotype:	IgG
Specificity:	This antibody detects SYPL2. It will not cross-react with SYPL1.
Cross-Reactivity (Details):	Species reactivity (tested): Human, mouse, rat
Purification:	Peptide affinity chromatography

Target Details

Target:	SYPL2
---------	-------

Target Details

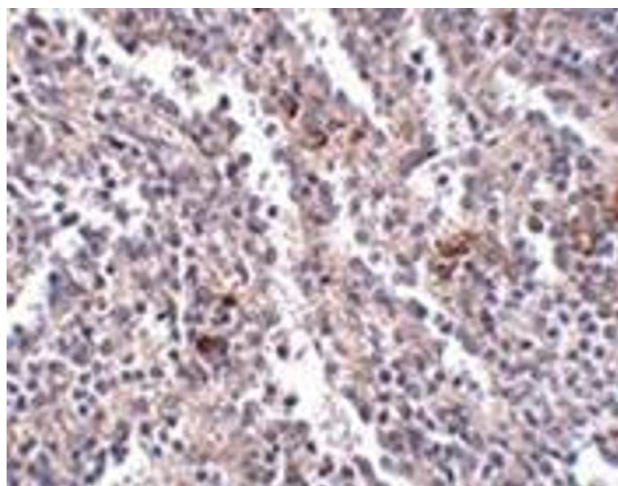
Alternative Name:	SYPL2 (SYPL2 Products)
Background:	<p>SYPL2, also known as Mitsugumin 29, was initially identified as a transmembrane protein from the triad junction in skeletal muscle that had significant homology with members of the synaptophysin family. SYPL2 is thought to participate in the excitation-contraction coupling process of skeletal muscle as SYPL2-null mice showed reduced muscle contractile force and altered triad junction structure and increased susceptibility to fatigue of the skeletal muscle. SYPL2 plays a critical role in muscle Ca²⁺ signaling by regulating the process of store-operated Ca²⁺ entry and interacts with ryanodine receptor (RyR), thereby influencing intracellular Ca²⁺ homeostasis through changes in the RyR/Ca²⁺ release function. Co-expression of SYPL2 and RyR in cultured cells leads to apoptotic cell death resulting from the depletion of Ca²⁺ from the intracellular stores. At least two isoforms of SYPL2 are known to exist. Synonyms:</p> <p>Synaptophysin-like protein 2</p>
Gene ID:	284612
NCBI Accession:	NP_001035799

Application Details

Application Notes:	<p>ELISA. Western blot. Immunohistochemistry on paraffin sections.</p> <p>Other applications not tested.</p> <p>Optimal dilutions are dependent on conditions and should be determined by the user.</p>
Restrictions:	For Research Use only

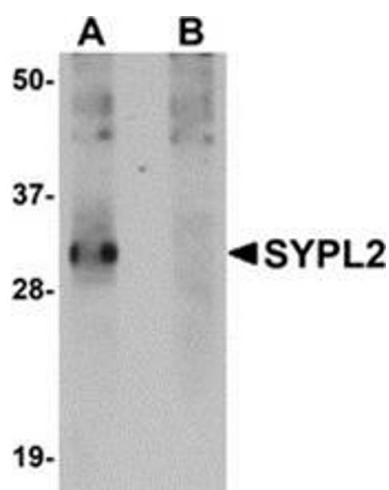
Handling

Buffer:	PBS containing 0.02 % sodium azide
Preservative:	Sodium azide
Precaution of Use:	This product contains sodium azide: a POISONOUS AND HAZARDOUS SUBSTANCE which should be handled by trained staff only.
Handling Advice:	Avoid repeated freezing and thawing.
Storage:	4 °C/-20 °C
Storage Comment:	Store at 2 - 8 °C for up to one month or (in aliquots) at -20 °C for longer.



Immunohistochemistry (Paraffin-embedded Sections)

Image 1. Immunohistochemistry of SYPL2 in human spleen tissue with this product at 2.5 µg/ml.



Western Blotting

Image 2. Western blot analysis of SYPL2 in human spleen tissue lysate with this product at 1 µg/ml in (A) the absence and (B) the presence of blocking peptide.