

Datasheet for ABIN500859  
**anti-TAB1 antibody (Center)**

## 2 Images

[Go to Product page](#)

## Overview

Quantity:	0.1 mg
Target:	TAB1
Binding Specificity:	Center
Reactivity:	Human, Mouse
Host:	Rabbit
Clonality:	Polyclonal
Conjugate:	This TAB1 antibody is un-conjugated
Application:	Western Blotting (WB), Immunofluorescence (IF), Enzyme Immunoassay (EIA)

## Product Details

Immunogen:	TAB1 antibody was raised against a synthetic peptide corresponding to 13 amino acids in the center of human TAB1.
Isotype:	IgG
Specificity:	This antibody detects TAB1 / MAP3K7IP1.
Cross-Reactivity (Details):	Species reactivity (tested): Human, mouse
Purification:	Peptide affinity chromatography

## Target Details

Target:	TAB1
Alternative Name:	TAB1 / MAP3K7IP1 ( <a href="#">TAB1 Products</a> )

## Target Details

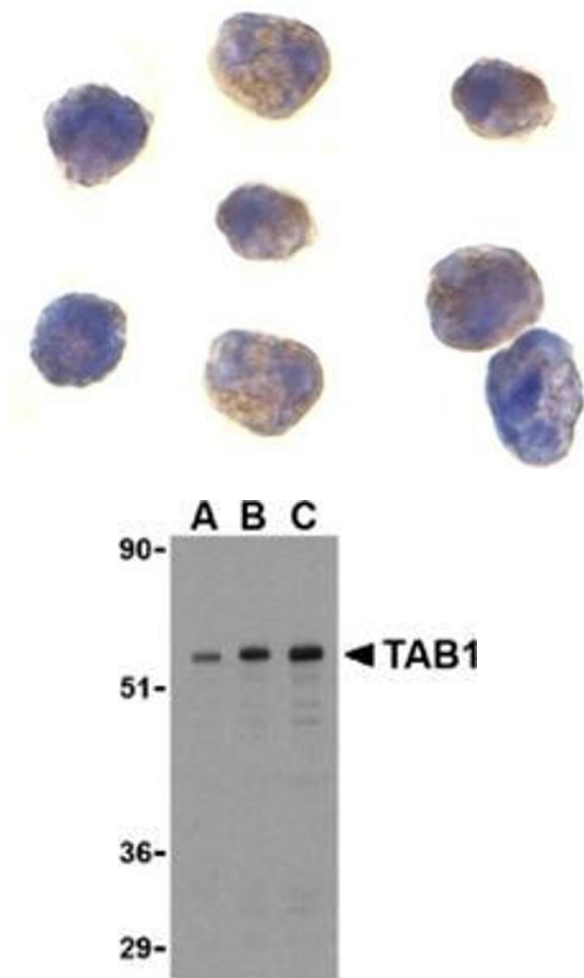
Background:	TAB1 was identified as a regulator of the MAP kinase kinase kinase TAK1/MAP3K7 (1), which is known to mediate various intracellular signaling pathways, such as those induced by TGF-beta and members of the Toll-IL-1R (TIR) superfamily (2), thus acting as an intermediate in both proliferative and innate and adaptive immune responses (3). This protein, together with either TAB2 or TAB3, activates TAK1 kinase in response to upstream signals (4,5). It has been shown that the C-terminal portion of TAB1 is sufficient for binding and activation of TAK1, while a portion of the N-terminus acts as a dominant-negative inhibitor of TGF-beta, demonstrating how this protein can function as a mediator between TGF-beta receptors and TAK1 (6).Synonyms: Mitogen-activated protein kinase kinase kinase 7-interacting protein 1, TAK1-binding protein 1, TGF-beta-activated kinase 1-binding protein 1
Gene ID:	10454
NCBI Accession:	<a href="#">NP_006107</a>
Pathways:	<a href="#">TLR Signaling</a> , <a href="#">Fc-epsilon Receptor Signaling Pathway</a> , <a href="#">Activation of Innate immune Response</a> , <a href="#">Toll-Like Receptors Cascades</a>

## Application Details

Application Notes:	ELISA. Western blot: 0.5 to 1 µg/mL. Immunofluorescence. Other applications not tested. Optimal dilutions are dependent on conditions and should be determined by the user.
Restrictions:	For Research Use only

## Handling

Buffer:	PBS containing 0.02 % sodium azide
Preservative:	Sodium azide
Precaution of Use:	This product contains sodium azide: a POISONOUS AND HAZARDOUS SUBSTANCE which should be handled by trained staff only.
Handling Advice:	Avoid repeated freezing and thawing.
Storage:	4 °C/-20 °C
Storage Comment:	Store at 2 - 8 °C for up to one month or (in aliquots) at -20 °C for longer.



**Immunofluorescence**

**Image 1.** Immunocytochemistry of TAB1 in K562 cells with this product at 1 µg/ml.

**Western Blotting**

**Image 2.** Western blot analysis of TAB1 in 3T3 cell lysate with this product at (A) 0.5, (B) 1, and (C) 2 µg/ml.