

Datasheet for ABIN500877

**anti-IL27 Receptor alpha antibody (C-Term)****2** Images[Go to Product page](#)

## Overview

Quantity:	0.1 mg
Target:	IL27 Receptor alpha (IL27RA)
Binding Specificity:	C-Term
Reactivity:	Human, Mouse
Host:	Rabbit
Clonality:	Polyclonal
Conjugate:	This IL27 Receptor alpha antibody is un-conjugated
Application:	Western Blotting (WB), Immunohistochemistry (Paraffin-embedded Sections) (IHC (p)), Enzyme Immunoassay (EIA)

## Product Details

Immunogen:	TCCR antibody was raised against a synthetic peptide corresponding to amino acids near the carboxy terminus of human TCCR precursor. Remarks: The sequence is identical to that of mouse TCCR.
Isotype:	IgG
Specificity:	This antibody detects TCCR / IL27RA at C-term.
Cross-Reactivity (Details):	Species reactivity (expected):MouseSpecies reactivity (tested):Human
Purification:	Peptide affinity chromatography

## Target Details

Target:	IL27 Receptor alpha (IL27RA)
---------	------------------------------

## Target Details

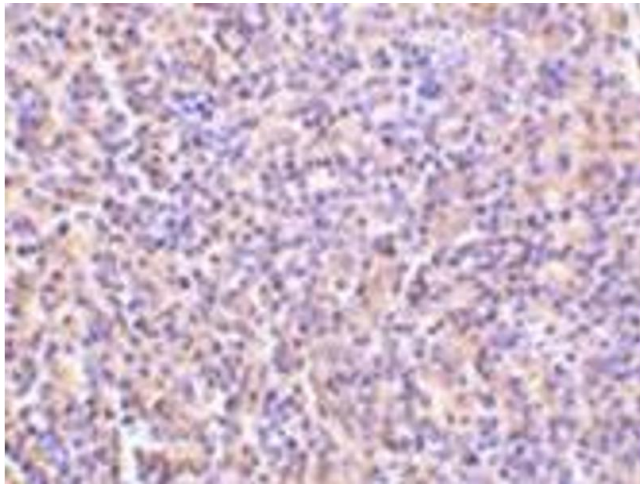
Alternative Name:	TCCR / IL27RA ( <a href="#">IL27RA Products</a> )
Background:	Upon antigen challenge, T-helper cells differentiate into two functional distinct subsets, Th1 and Th2. Th1 cells produce IL-2, IFN-gamma and lymphotoxin-beta that augment cell mediated immune response while Th2 cells secrete IL-4, IL-5, and IL-10 that enhance humoral immunity. The function of T-helper cells is regulated by cytokines. A novel cytokine receptor was recently identified and cloned (1,2). It is a new member in the type I cytokine receptor family and designated TCCR for T-cell cytokine receptor and WSX-1 (1,2). TCCR deficient mice had impaired Th1 responses to protein antigen challenge, including decreased levels of IFN-gamma and Th1-dependent antibody IgG2a . TCCR is predominately expressed in thymus, spleen, lymph nodes and peripheral blood leukocytes.Synonyms: CRL1, IL-27R-alpha, Interleukin-27 receptor subunit alpha, T-cell cytokine receptor type 1, UNQ296/PRO336, WSX-1, WSX1
Gene ID:	9466
NCBI Accession:	<a href="#">NP_004834</a>
Pathways:	<a href="#">Regulation of Leukocyte Mediated Immunity</a> , <a href="#">Production of Molecular Mediator of Immune Response</a>

## Application Details

Application Notes:	ELISA. Western blot: 0.5 to 1 µg/mL. Immunohistochemistry on paraffin sections. Other applications not tested. Optimal dilutions are dependent on conditions and should be determined by the user.
Restrictions:	For Research Use only

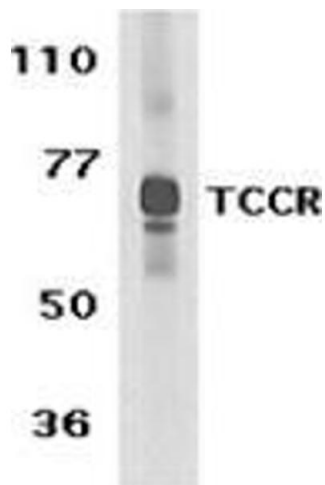
## Handling

Buffer:	PBS containing 0.02 % sodium azide
Preservative:	Sodium azide
Precaution of Use:	This product contains sodium azide: a POISONOUS AND HAZARDOUS SUBSTANCE which should be handled by trained staff only.
Handling Advice:	Avoid repeated freezing and thawing.
Storage:	4 °C/-20 °C
Storage Comment:	Store at 2 - 8 °C for up to one month or (in aliquots) at -20 °C for longer.



#### Immunohistochemistry (Paraffin-embedded Sections)

**Image 1.** Immunohistochemistry of TCCR in human spleen tissue with this product at 5 µg/ml.



#### Western Blotting

**Image 2.** Western blot analysis of TCCR expression in human spleen tissue lysate with this product at 1 µg /ml.