

Datasheet for ABIN500891
anti-RASD2 antibody (N-Term)

2 Images

[Go to Product page](#)

Overview

Quantity:	0.1 mg
Target:	RASD2
Binding Specificity:	N-Term
Reactivity:	Human, Mouse, Rat
Host:	Rabbit
Clonality:	Polyclonal
Conjugate:	This RASD2 antibody is un-conjugated
Application:	Western Blotting (WB), Immunohistochemistry (Paraffin-embedded Sections) (IHC (p)), Enzyme Immunoassay (EIA)

Product Details

Immunogen:	TEM2 antibody was raised against a 16 amino acid peptide near the amino terminus of the human TEM2.
Isotype:	IgG
Specificity:	This antibody detects RASD2 / TEM2 at N-term. TEM2 antibody may cross-react with the closely related protein RASD1.
Cross-Reactivity (Details):	Species reactivity (tested): Human, mouse, rat
Purification:	Peptide affinity chromatography

Target Details

Target:	RASD2
---------	-------

Target Details

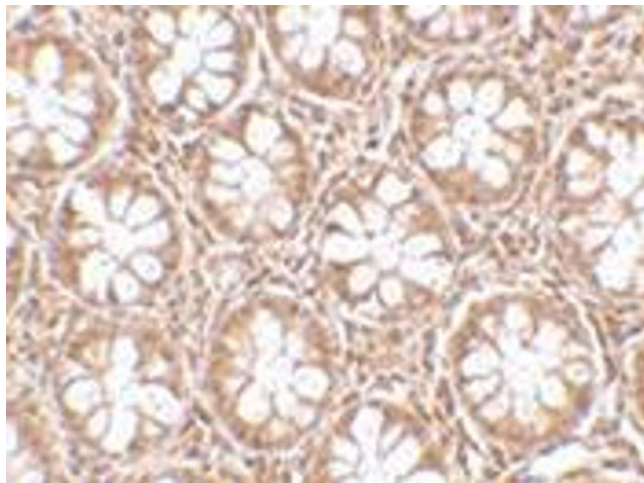
Alternative Name:	RASD2 / TEM2 (RASD2 Products)
Background:	Rhes, also known as tumor endothelial marker 2 (TEM2), is a small GTP-binding protein that is predominantly expressed in the striatal region of the brain. This protein belongs to the RASD subfamily of Ras-related GTP-binding protein superfamily and is thought to play a role in the normal development and function of the brain as mice lacking this gene showed increased anxiety levels and motor coordination deficits. Rhes was identified as TEM2 through analysis of genes whose expression was upregulated in tumor endothelium. Tumor endothelial markers are significantly up-regulated during angiogenesis and neoangiogenesis that are crucial for the growth of solid tumors. TEMs localized on the cell surface and conserved across species are of particular interest for future development of anti-angiogenic therapies. Synonyms: GTP-binding protein Rhes, Ras homolog enriched in striatum, Tumor endothelial marker 2
Gene ID:	23551
UniProt:	Q96D21

Application Details

Application Notes:	ELISA. Western blot: 1 - 2 µg/mL. Immunohistochemistry on paraffin sections. Other applications not tested. Optimal dilutions are dependent on conditions and should be determined by the user.
Restrictions:	For Research Use only

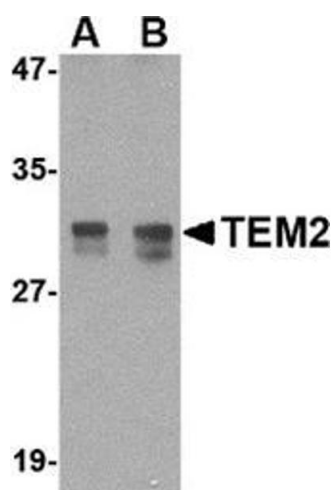
Handling

Buffer:	PBS containing 0.02 % sodium azide
Preservative:	Sodium azide
Precaution of Use:	This product contains sodium azide: a POISONOUS AND HAZARDOUS SUBSTANCE which should be handled by trained staff only.
Handling Advice:	Avoid repeated freezing and thawing.
Storage:	4 °C/-20 °C
Storage Comment:	Store at 2 - 8 °C for up to one month or (in aliquots) at -20 °C for longer.



Immunohistochemistry (Paraffin-embedded Sections)

Image 1. Immunohistochemistry of TEM2 in human colon tissue with this product at 2.5 µg/ml.



Western Blotting

Image 2. Western blot analysis of TEM2 in rat colon tissue lysate with this product at (A) 1 and (B) 2 µg/ml.