

Datasheet for ABIN500893
anti-ARHGEF17 antibody (Center)

2 Images

[Go to Product page](#)

Overview

Quantity:	0.1 mg
Target:	ARHGEF17
Binding Specificity:	Center
Reactivity:	Human
Host:	Rabbit
Clonality:	Polyclonal
Conjugate:	This ARHGEF17 antibody is un-conjugated
Application:	Western Blotting (WB), Immunohistochemistry (Paraffin-embedded Sections) (IHC (p)), Enzyme Immunoassay (EIA)

Product Details

Immunogen:	TEM4 antibody was raised against a 18 amino acid peptide near the center of human TEM4.
Isotype:	IgG
Specificity:	This antibody detects ARHGEF17 / TEM4 at center.
Cross-Reactivity (Details):	Species reactivity (tested):Human
Purification:	Peptide affinity chromatography

Target Details

Target:	ARHGEF17
Alternative Name:	ARHGEF17 / TEM4 (ARHGEF17 Products)

Target Details

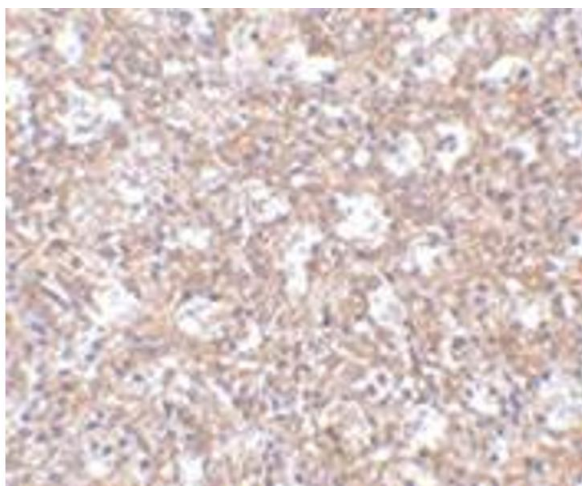
Background:	Rho GTPases, which are activated by specific guanine-nucleotide exchange factors (GEFs), play pivotal roles in several cellular functions. TEM4, encoding a protein containing 1510 amino acids, contains a RhoGEF-specific Dbl homology (DH) domain but lacks their typical pleckstrin homology domain. TEM4 is a Rho-specific GEF with novel structural and regulatory properties and predominant expression in the heart. It couples tyrosine kinase signals with the activation of the rho/rac GTPases, thus leading to cell differentiation and/or proliferation. Elevated levels of TEM4, TEM5, TEM6, TEM7 and TEM7R were also raised in breast cancer tissues. TEM4 could also prove to be useful targets therapeutically. Synonyms: 164 kDa Rho-specific guanine-nucleotide exchange factor, KIAA0337, Rho guanine nucleotide exchange factor 17, Tumor endothelial marker 4, p164-RhoGEF, p164RhoGEF
Gene ID:	9828
UniProt:	Q96PE2

Application Details

Application Notes:	ELISA. Western blot: 1 - 2 µg/mL. Immunohistochemistry on paraffin sections. Other applications not tested. Optimal dilutions are dependent on conditions and should be determined by the user.
Restrictions:	For Research Use only

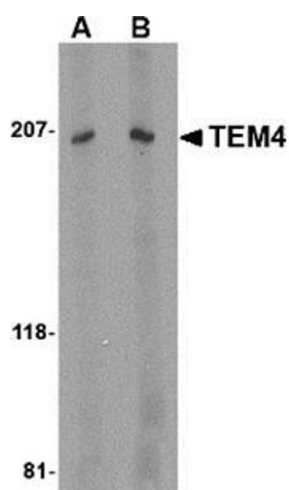
Handling

Buffer:	PBS containing 0.02 % sodium azide
Preservative:	Sodium azide
Precaution of Use:	This product contains sodium azide: a POISONOUS AND HAZARDOUS SUBSTANCE which should be handled by trained staff only.
Handling Advice:	Avoid repeated freezing and thawing.
Storage:	4 °C/-20 °C
Storage Comment:	Store at 2 - 8 °C for up to one month or (in aliquots) at -20 °C for longer.



Immunohistochemistry (Paraffin-embedded Sections)

Image 1. Immunohistochemistry of TEM4 in human spleen tissue with this product at 2.5 µg/ml.



Western Blotting

Image 2. Western blot analysis of TEM4 in Jurkat Cell lysate with this product at (A) 1 and (B) 2 µg/ml.