

Datasheet for ABIN500936
anti-TLR1 antibody (N-Term)



[Go to Product page](#)

2 Images

Overview

Quantity:	0.1 mg
Target:	TLR1
Binding Specificity:	N-Term
Reactivity:	Human, Mouse
Host:	Rabbit
Clonality:	Polyclonal
Conjugate:	This TLR1 antibody is un-conjugated
Application:	Western Blotting (WB), Immunohistochemistry (Paraffin-embedded Sections) (IHC (p)), Enzyme Immunoassay (EIA)

Product Details

Immunogen:	TLR1 antibody was raised against a peptide corresponding to 16 amino acids near the amino terminus of human TLR1.
Isotype:	IgG
Cross-Reactivity (Details):	Species reactivity (tested): Human, mouse
Purification:	Ion exchange chromatography

Target Details

Target:	TLR1
Alternative Name:	CD281 / TLR1 (TLR1 Products)

Target Details

Background: Toll-like receptors (TLRs) are evolutionarily conserved pattern-recognition molecules resembling the toll proteins that mediate antimicrobial responses in *Drosophila*. These proteins recognize different microbial products during infection and serve as an important link between the innate and adaptive immune responses (1-3). The TLRs act through adaptor molecules such as MyD88 and TIRAP to activate various kinases and transcription factors (4,5) so the organism can respond to potential infection. TLR1 is co-expressed with TLR2 on myeloid cells of the innate immune systems in lymphoid tissue such as monocytes and dendritic cells (6) where they form heterodimers that can recognize triacylated lipoproteins (7).
Synonyms: KIAA0012, TIL, Toll-like receptor 1, Toll/interleukin-1 receptor-like protein

Pathways: [TLR Signaling](#), [Activation of Innate immune Response](#), [Cellular Response to Molecule of Bacterial Origin](#), [Toll-Like Receptors Cascades](#)

Application Details

Application Notes: ELISA. Western blot: 1 to 2 µg/mL. Immunohistochemistry on paraffin sections.
Other applications not tested.
Optimal dilutions are dependent on conditions and should be determined by the user.

Restrictions: For Research Use only

Handling

Buffer: PBS containing 0.02 % sodium azide

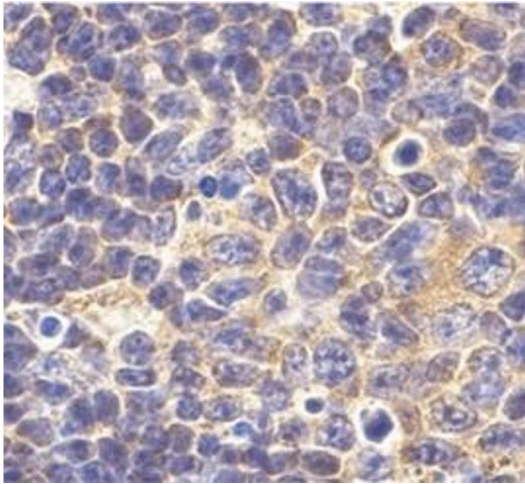
Preservative: Sodium azide

Precaution of Use: This product contains sodium azide: a POISONOUS AND HAZARDOUS SUBSTANCE which should be handled by trained staff only.

Handling Advice: Avoid repeated freezing and thawing.

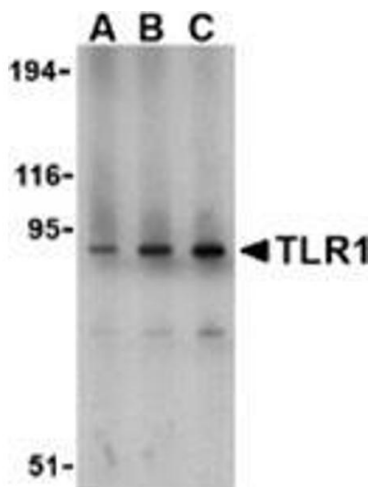
Storage: 4 °C/-20 °C

Storage Comment: Store at 2 - 8 °C for up to one month or (in aliquots) at -20 °C for longer.



Immunohistochemistry (Paraffin-embedded Sections)

Image 1. Immunohistochemistry of TLR1 in mouse spleen tissue with this product at 10 µg/ml.



Western Blotting

Image 2. Western blot analysis of TLR1 in mouse spleen lysate with this product at (A) 1, (B) 2, and (C) 4 µg/ml.