

Datasheet for ABIN500940  
**anti-TLR10 antibody (Center)**[Go to Product page](#)

## 1 Image

## Overview

Quantity:	0.1 mg
Target:	TLR10
Binding Specificity:	Center
Reactivity:	Human
Host:	Rabbit
Clonality:	Polyclonal
Conjugate:	This TLR10 antibody is un-conjugated
Application:	Western Blotting (WB), Enzyme Immunoassay (EIA)

## Product Details

Immunogen:	TLR10 antibody was raised against a peptide corresponding to 14 amino acids near the middle of human TLR10.
Isotype:	IgG
Cross-Reactivity (Details):	Species reactivity (tested):Human
Purification:	Ion exchange chromatography

## Target Details

Target:	TLR10
Alternative Name:	CD290 / TLR10 ( <a href="#">TLR10 Products</a> )
Background:	Toll-like receptors (TLRs) are signaling molecules that recognize different microbial products

## Target Details

during infection and serve as an important link between the innate and adaptive immune responses (1-3). These proteins act through adaptor molecules such as MyD88 and TIRAP to activate various kinases and transcription factors (4,5). TLR10 is highly homologous to TLRs 1 and 6 and is most highly expressed in lymphoid tissues (6). Most recently genetic variation in TLR10 has been associated with contributing to asthma risk (7). It should be noted that TLR10 exists in mice only as a pseudogene (8).Synonyms: Toll-like receptor 10, UNQ315/PRO358

Gene ID: 81793

Pathways: [TLR Signaling](#), [Activation of Innate immune Response](#), [Toll-Like Receptors Cascades](#)

## Application Details

Application Notes: ELISA. Western blot: 0.5 to 1 µg/mL. Despite its predicted size of approx. 90 kDa, a band corresponding to TLR10 is observed at approx. 75 kDa in immunoblot assays.  
Other applications not tested.  
Optimal dilutions are dependent on conditions and should be determined by the user.

Restrictions: For Research Use only

## Handling

Buffer: PBS containing 0.02 % sodium azide

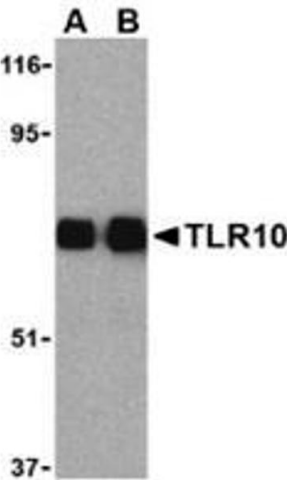
Preservative: Sodium azide

Precaution of Use: This product contains sodium azide: a POISONOUS AND HAZARDOUS SUBSTANCE which should be handled by trained staff only.

Handling Advice: Avoid repeated freezing and thawing.

Storage: 4 °C/-20 °C

Storage Comment: Store at 2 - 8 °C for up to one month or (in aliquots) at -20 °C for longer.



Western Blotting

**Image 1.** Western blot analysis of TLR10 in human lymph node cell lysates with this product at (A) 0.5 and (B) 1  $\mu$  g/ml.