

Datasheet for ABIN500956  
**anti-TLR5 antibody (C-Term)**



[Go to Product page](#)

2 Images

## Overview

Quantity:	0.1 mg
Target:	TLR5
Binding Specificity:	C-Term
Reactivity:	Human, Mouse
Host:	Rabbit
Clonality:	Polyclonal
Conjugate:	This TLR5 antibody is un-conjugated
Application:	Western Blotting (WB), Immunofluorescence (IF), Enzyme Immunoassay (EIA)

## Product Details

Immunogen:	TLR5 antibody was raised against a peptide corresponding to 15 amino acids near the carboxy terminus of human TLR5.
Isotype:	IgG
Specificity:	This antibody detects TLR5 at C-term.
Cross-Reactivity (Details):	Species reactivity (tested): Human, mouse
Purification:	Peptide affinity chromatography

## Target Details

Target:	TLR5
Alternative Name:	TLR5 ( <a href="#">TLR5 Products</a> )

## Target Details

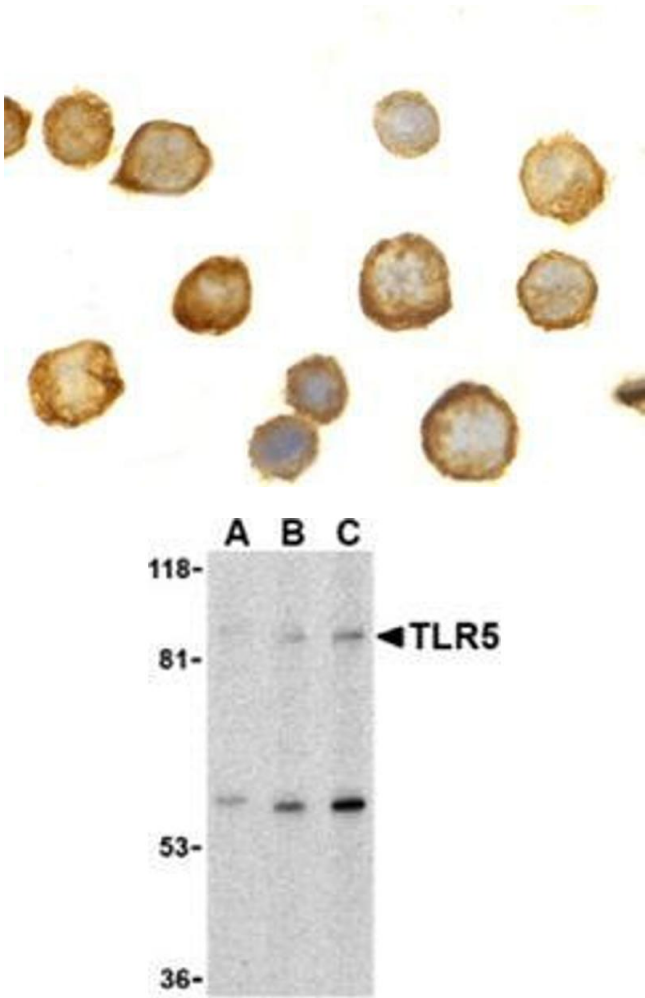
Background:	<p>Toll-like receptors (TLRs) are evolutionarily conserved pattern-recognition molecules resembling the toll proteins that mediate antimicrobial responses in <i>Drosophila</i>. These proteins recognize different microbial products during infection and serve as an important link between the innate and adaptive immune responses (1,2). The TLRs act through adaptor molecules such as MyD88 and TIRAP to activate various kinases and transcription factors (3) so the organism can respond to potential infection. TLR5 recognizes flagellin from both Gram-positive and Gram-negative bacteria and will cause the activation of NF-<math>\kappa</math>B, leading to the activation of TNF-<math>\alpha</math> and other cytokines (4). A common TLR5 stop codon polymorphism that disrupts TLR5 signaling is associated with susceptibility to Legionnaires' disease and demonstrates the importance of TLR5 in the innate immune response (5).Synonyms: TIL3, Toll-like receptor 5, Toll/interleukin-1 receptor-like protein 3</p>
Gene ID:	7100
NCBI Accession:	<a href="#">NP_003259</a>
Pathways:	<a href="#">TLR Signaling</a> , <a href="#">Activation of Innate immune Response</a> , <a href="#">Cellular Response to Molecule of Bacterial Origin</a> , <a href="#">Toll-Like Receptors Cascades</a>

## Application Details

Application Notes:	<p>ELISA. Western blot. Immunofluorescence.</p> <p>Other applications not tested.</p> <p>Optimal dilutions are dependent on conditions and should be determined by the user.</p>
Restrictions:	For Research Use only

## Handling

Buffer:	PBS containing 0.02 % sodium azide
Preservative:	Sodium azide
Precaution of Use:	This product contains sodium azide: a POISONOUS AND HAZARDOUS SUBSTANCE which should be handled by trained staff only.
Handling Advice:	Avoid repeated freezing and thawing.
Storage:	4 °C/-20 °C
Storage Comment:	Store at 2 - 8 °C for up to one month or (in aliquots) at -20 °C for longer.



Immunofluorescence

**Image 1.** Immunocytochemistry of TLR5 in THP-1 cells with this product at 10 µg/ml.

Western Blotting

**Image 2.** Western blot analysis of TLR5 in THP-1 cell lysate with this product at (A) 0.5, (B) 1 and (C) 2 µg/ml.