

Datasheet for ABIN500976
anti-TMEM184B antibody (C-Term)[Go to Product page](#)

2 Images

Overview

Quantity:	0.1 mg
Target:	TMEM184B
Binding Specificity:	C-Term
Reactivity:	Human, Mouse, Rat
Host:	Rabbit
Clonality:	Polyclonal
Conjugate:	This TMEM184B antibody is un-conjugated
Application:	Western Blotting (WB), Immunofluorescence (IF), Immunohistochemistry (Paraffin-embedded Sections) (IHC (p)), Enzyme Immunoassay (EIA)

Product Details

Immunogen:	TMEM184B antibody was raised against a 15 amino acid peptide near the carboxy terminus of human TMEM184B.
Isotype:	IgG
Specificity:	This antibody detects TMEM184B near C-term.
Purification:	Peptide affinity chromatography

Target Details

Target:	TMEM184B
Alternative Name:	TMEM184B (TMEM184B Products)

Target Details

Background: TMEM184B, also known as C22orf5, is a 407 amino acid multi-pass membrane protein and represents a novel gene in the activation of the MAPK signaling pathway. The gene encoding TMEM184B maps to human chromosome 22, mutations in several of the genes in chromosome 22 are involved in the development of autism, schizophrenia, Phelan-McDermid syndrome and Neurofibromatosis type 2, suggesting that TMEM184B may play a role in these syndromes. Synonyms: C22orf5, Putative MAPK-activating protein FM08, Transmembrane protein 184B

Gene ID: 25829

NCBI Accession: [NP_036396](#)

Application Details

Application Notes: ELISA. Western blot.
Other applications not tested.
Optimal dilutions are dependent on conditions and should be determined by the user.

Restrictions: For Research Use only

Handling

Concentration: 1.0 mg/mL

Buffer: PBS containing 0.02 % sodium azide

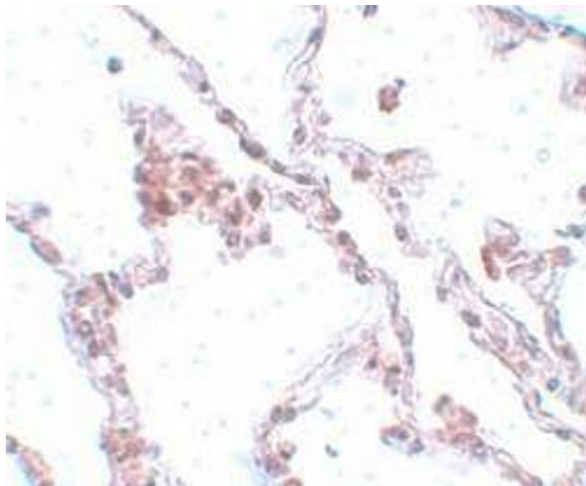
Preservative: Sodium azide

Precaution of Use: This product contains sodium azide: a POISONOUS AND HAZARDOUS SUBSTANCE which should be handled by trained staff only.

Handling Advice: Avoid repeated freezing and thawing.

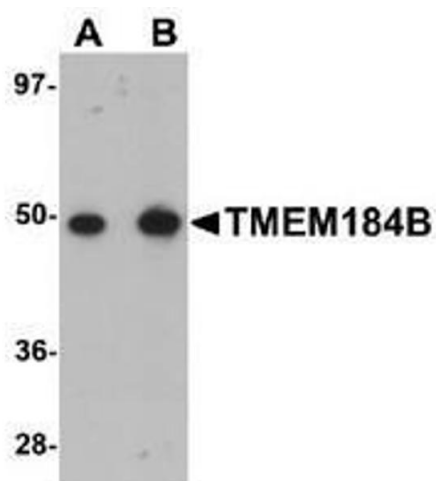
Storage: 4 °C/-20 °C

Storage Comment: Store undiluted at 2-8 °C for one month or (in aliquots) at -20 °C for longer.



Immunohistochemistry (Paraffin-embedded Sections)

Image 1. Immunohistochemistry staining of human lung tissue (Paraffin section) using TMEM184B Antibody at 5 µg/ml.



Western Blotting

Image 2. Western blot analysis with rat lung tissue lysate using TMEM184B Antibody at (A) 1 and (B) 2 µg/ml.