

Datasheet for ABIN500984
anti-TMEM38A antibody (C-Term)

2 Images

[Go to Product page](#)

Overview

Quantity:	0.1 mg
Target:	TMEM38A
Binding Specificity:	C-Term
Reactivity:	Human, Rat, Mouse
Host:	Rabbit
Clonality:	Polyclonal
Application:	Western Blotting (WB), Enzyme Immunoassay (EIA)

Product Details

Immunogen:	TMEM38A antibody was raised against a 17 amino acid peptide from near the carboxy terminus of human TMEM38A.
Isotype:	IgG
Specificity:	This antibody detects TMEM38A.
Purification:	Peptide affinity chromatography

Target Details

Target:	TMEM38A
Alternative Name:	TMEM38A (TMEM38A Products)
Background:	TMEM38A and TMEM38B are two recently identified trimeric intracellular cation (TRIC) channel subtypes. TMEM38A is preferentially expressed in excitable tissues such as striated muscle and brain and localizes to the sarcoplasmic reticulum (SR) in muscle tissues. Mice deficient in

Target Details

both TMEM38A and TMEM38B suffer embryonic cardiac failure, the cardiac myocytes display severe dysfunction in SR Ca²⁺ handling, weakened Ca²⁺ release, and reduced K⁺ permeability indicating that the TRIC cation channels are likely to act as counter-ion channels that function in synchronization with Ca²⁺ release from intracellular stores. Other experiments have shown that TMEM38A and TMEM38B can act with junctophilin proteins to support efficient ryanodine receptor-mediated Ca²⁺ release in muscle cells. Synonyms: TRIC-A, TRICA, Transmembrane protein 38A, Trimeric intracellular cation channel type A

Gene ID: 79041

Application Details

Application Notes: ELISA. Western blot: 1 - 2 µg/mL.
Other applications not tested.
Optimal dilutions are dependent on conditions and should be determined by the user.

Restrictions: For Research Use only

Handling

Concentration: 1.0 mg/mL

Buffer: PBS containing 0.02 % sodium azide

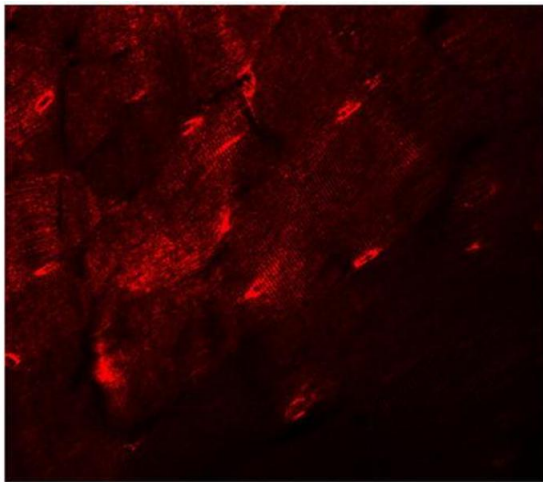
Preservative: Sodium azide

Precaution of Use: This product contains sodium azide: a POISONOUS AND HAZARDOUS SUBSTANCE which should be handled by trained staff only.

Handling Advice: Avoid repeated freezing and thawing.

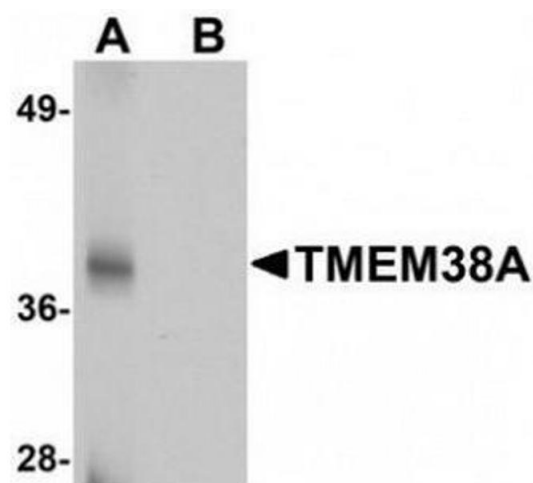
Storage: 4 °C/-20 °C

Storage Comment: Store undiluted at 2-8 °C for one month or (in aliquots) at -20 °C for longer.



Immunofluorescence

Image 1. Immunofluorescence of TMEM38A in mouse skeletal muscle tissue with TMEM38A antibody at 20 µg/ml.



Western Blotting

Image 2. Western blot analysis of TMEM38A in rat skeletal muscle tissue lysate with TMEM38A antibody at 1 µg/mL in (A) the absence and (B) the presence of blocking peptide.