

Datasheet for ABIN500992
anti-TMED10 antibody (Center)[Go to Product page](#)

2 Images

Overview

Quantity:	0.1 mg
Target:	TMED10
Binding Specificity:	Center
Reactivity:	Human, Mouse, Rat
Host:	Rabbit
Clonality:	Polyclonal
Conjugate:	This TMED10 antibody is un-conjugated
Application:	Western Blotting (WB), Immunohistochemistry (Paraffin-embedded Sections) (IHC (p)), Enzyme Immunoassay (EIA)

Product Details

Immunogen:	TMP21 antibody was raised against a 18 amino acid peptide from near the center of human TMP21.
Isotype:	IgG
Specificity:	This antibody detects TMED10 / TMP21 at Center.
Cross-Reactivity (Details):	Species reactivity (tested):Human, mouse, rat
Purification:	Peptide affinity chromatography

Target Details

Target:	TMED10
---------	--------

Target Details

Alternative Name: TMED10 / TMP21 ([TMED10 Products](#))

Background: TMP21 is a ubiquitously expressed protein that is involved in vesicular targeting and protein transport. More recent experiments have shown that it is also a component in the presenilin complex and modulates the γ -secretase but not the ϵ -secretase cleavage activity of the amyloid precursor protein. The presenilin complex is composed of the proteins APH1, nicastrin, and PEN2 in addition to presenilin-1. Together, these proteins cleave the amyloid precursor protein at what is known as the γ and ϵ -sites and can lead to the accumulation of the A β cleavage product that is associated with Alzheimer's disease. Co-immunoprecipitation experiments using antibodies against these proteins also yielded TMP21 indicating that TMP21 may play a role in the regulation of this complex. Suppression of TMP21 expression by siRNA in transfected cells caused increased γ -secretase activity but not ϵ -secretase activity, and increased A β production, demonstrating that TMP21 can modulate γ -secretase activity. **Synonyms:** 21 kDa transmembrane-trafficking protein, S311125, Transmembrane emp24 domain-containing protein 10, Transmembrane protein Tmp21

Gene ID: 10972

Application Details

Application Notes: ELISA. Western blot: 1 - 2 μ g/mL. Immunohistochemistry on paraffin sections.
Other applications not tested.
Optimal dilutions are dependent on conditions and should be determined by the user.

Restrictions: For Research Use only

Handling

Buffer: PBS containing 0.02 % sodium azide

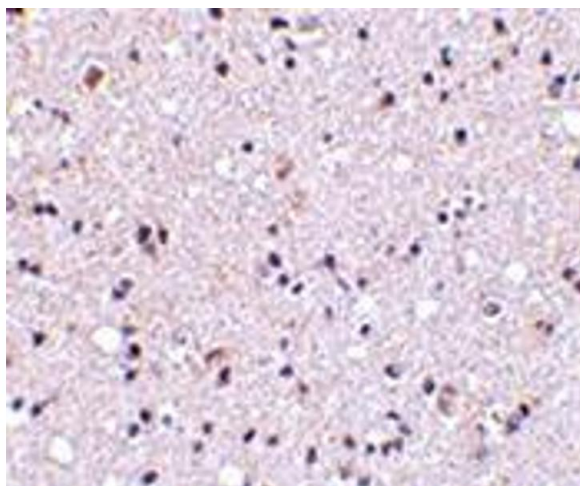
Preservative: Sodium azide

Precaution of Use: This product contains sodium azide: a POISONOUS AND HAZARDOUS SUBSTANCE which should be handled by trained staff only.

Handling Advice: Avoid repeated freezing and thawing.

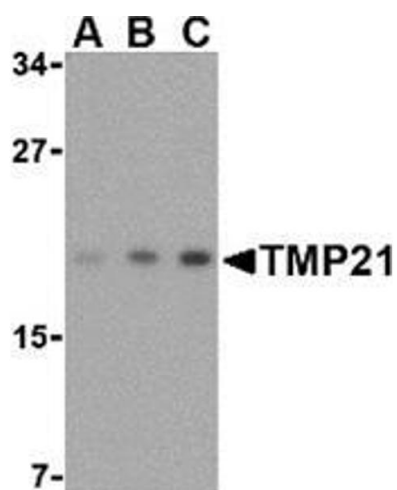
Storage: 4 °C/-20 °C

Storage Comment: Store at 2 - 8 °C for up to one month or (in aliquots) at -20 °C for longer.



Immunohistochemistry (Paraffin-embedded Sections)

Image 1. Immunohistochemistry of TMP21 in human brain tissue with this product at 5 µg/ml.



Western Blotting

Image 2. Western blot analysis of TMP21 in mouse brain tissue lysate with this product at (A) 0.5, (B) 1 and (C) 2 µg/ml.