



[Go to Product page](#)

Datasheet for ABIN501006

anti-TOLLIP antibody (C-Term)

2 Images

Overview

Quantity:	0.1 mg
Target:	TOLLIP
Binding Specificity:	C-Term
Reactivity:	Human, Mouse, Rat
Host:	Rabbit
Clonality:	Polyclonal
Conjugate:	This TOLLIP antibody is un-conjugated
Application:	Western Blotting (WB), Immunofluorescence (IF), Enzyme Immunoassay (EIA)

Product Details

Immunogen:	TOLLIP antibody was raised against a 16 amino acid peptide from near the carboxy terminus of human TOLLIP.
Isotype:	IgG
Specificity:	This antibody detects TOLLIP at C-term.
Cross-Reactivity (Details):	Species reactivity (tested): Human, mouse, rat
Purification:	Peptide affinity chromatography

Target Details

Target:	TOLLIP
Alternative Name:	TOLLIP (TOLLIP Products)

Target Details

Background: Toll-like receptors (TLRs) are evolutionarily conserved pattern-recognition molecules resembling the toll proteins that mediate antimicrobial responses in *Drosophila*. These proteins recognize different microbial products during infection and serve as an important link between the innate and adaptive immune responses (1,2). The TLRs act through adaptor molecules to activate various kinases and transcription factors (3) so the organism can respond to potential infection. These adaptor molecules include TOLLIP, MyD88, and TRIF. TOLLIP associates directly with TLR2 and TLR 4, acting as an inhibitor to TLR activation (4). This negative regulation of TLR signaling may serve to limit the production of proinflammatory mediators during infection and inflammation. Synonyms: Toll-interacting protein

Gene ID: 54472

Application Details

Application Notes: ELISA. Western blot: 1 µg/mL. Immunofluorescence.
Other applications not tested.
Optimal dilutions are dependent on conditions and should be determined by the user.

Restrictions: For Research Use only

Handling

Concentration: 1.0 mg/mL

Buffer: PBS containing 0.02 % sodium azide

Preservative: Sodium azide

Precaution of Use: This product contains sodium azide: a POISONOUS AND HAZARDOUS SUBSTANCE which should be handled by trained staff only.

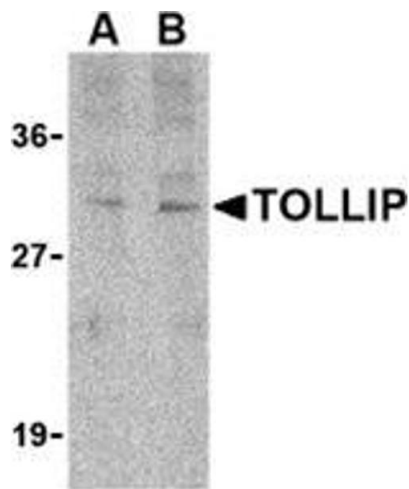
Storage: 4 °C

Storage Comment: Store the antibody undiluted at 2-8 °C for one month.



Immunofluorescence

Image 1. Immunocytochemistry of TOLLIP in THP-1 cells with this product at 2 $\mu\text{g/ml}$.



Western Blotting

Image 2. Western blot analysis of TOLLIP in rat brain cell lysate with this product at (A) 1 and (B) 2 $\mu\text{g/ml}$.