

Datasheet for ABIN501036
anti-TREX1 antibody (Center)[Go to Product page](#)

2 Images

Overview

Quantity:	0.1 mg
Target:	TREX1
Binding Specificity:	Center
Reactivity:	Human, Mouse, Rat
Host:	Rabbit
Clonality:	Polyclonal
Conjugate:	This TREX1 antibody is un-conjugated
Application:	Western Blotting (WB), Immunohistochemistry (Paraffin-embedded Sections) (IHC (p)), Enzyme Immunoassay (EIA)

Product Details

Immunogen:	TREX1 antibody was raised against a 15 amino acid peptide near the center of human TREX1.
Isotype:	IgG
Specificity:	This antibody detects TREX1. It will not cross-react with the related protein TREX2.
Cross-Reactivity (Details):	Species reactivity (tested): Human, mouse, rat
Purification:	Affinity chromatography

Target Details

Target:	TREX1
Alternative Name:	TREX1 (TREX1 Products)

Target Details

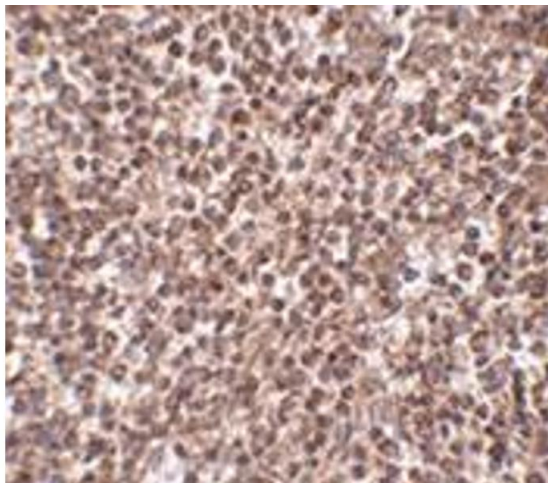
Background:	Trex1 is the major human 3' to 5' exonuclease which is required for checkpoint signaling after DNA damage. It is ubiquitously expressed, binds to single stranded DNA coated with replication protein A that accumulates at sites of DNA damage and recruits the ataxia telangiectasia and Rad3 related protein (ATR), a checkpoint kinase, to sites of DNA damage and replication stress. Trex1 is required for ATR expression. This gene uses two different open reading frames. The upstream ORF encodes proteins which interact with ATR and localize to intranuclear foci induced by DNA damage and are essential components of the DNA damage checkpoint. The downstream ORF encodes proteins with 3' to 5' exonuclease activity and may be a subunit of human DNA polymerase III. Multiple transcript variants encoding different isoforms have been found. Mutations in this gene result in Aicardi-Goutieres syndrome, chilblain lupus, and Cree encephalitis. Synonyms: 3'-5' exonuclease TREX1, DNase III, Three prime repair exonuclease 1
Gene ID:	11277
NCBI Accession:	NP_057465
Pathways:	Apoptosis

Application Details

Application Notes:	ELISA. Western blot: 1 - 2 µg/mL. Immunohistochemistry on paraffin sections. Other applications not tested. Optimal dilutions are dependent on conditions and should be determined by the user.
Restrictions:	For Research Use only

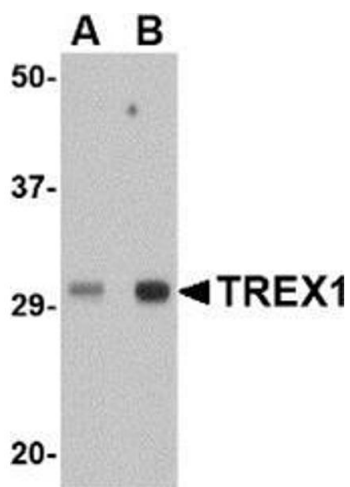
Handling

Buffer:	PBS containing 0.02 % sodium azide
Preservative:	Sodium azide
Precaution of Use:	This product contains sodium azide: a POISONOUS AND HAZARDOUS SUBSTANCE which should be handled by trained staff only.
Handling Advice:	Avoid repeated freezing and thawing.
Storage:	4 °C/-20 °C
Storage Comment:	Store at 2 - 8 °C for up to one month or (in aliquots) at -20 °C for longer.



Immunohistochemistry (Paraffin-embedded Sections)

Image 1. Immunohistochemistry of TREX1 in human spleen tissue with this product at 2.5 µg/ml.



Western Blotting

Image 2. Western blot analysis of TREX1 in human spleen tissue lysate with this product at (A) 0.5 µg/ml and (B) 1 µg/ml.