

Datasheet for ABIN501038
anti-TREX2 antibody (C-Term)[Go to Product page](#)

2 Images

Overview

| | |
|----------------------|--|
| Quantity: | 0.1 mg |
| Target: | TREX2 (Trex2) |
| Binding Specificity: | C-Term |
| Reactivity: | Human, Mouse, Rat |
| Host: | Rabbit |
| Clonality: | Polyclonal |
| Conjugate: | This TREX2 antibody is un-conjugated |
| Application: | Western Blotting (WB), Immunohistochemistry (Paraffin-embedded Sections) (IHC (p)), Enzyme Immunoassay (EIA) |

Product Details

| | |
|-----------------------------|---|
| Immunogen: | TREX2 antibody was raised against a 15 amino acid peptide near the carboxy terminus of human TREX2. |
| Isotype: | IgG |
| Specificity: | This antibody detects TREX2. The antibody will not cross-react with the related protein TREX1. |
| Cross-Reactivity (Details): | Species reactivity (tested): Human, mouse, rat |
| Purification: | Peptide affinity chromatography |

Target Details

| | |
|---------|---------------|
| Target: | TREX2 (Trex2) |
|---------|---------------|

Target Details

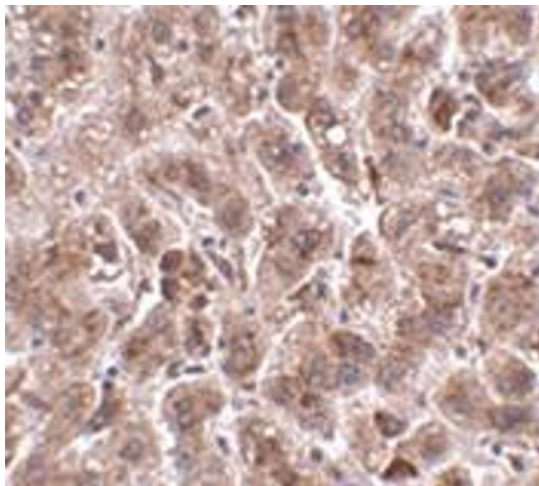
| | |
|-------------------|---|
| Alternative Name: | TREX2 (Trex2 Products) |
| Background: | TREX2 is one of two major human 3' to 5' exonucleases which are required for checkpoint signaling after DNA damage. While the related protein TREX1 is required for ATR expression and mutations in this gene result in Aicardi-Goutieres syndrome, chilblain lupus, and Cree encephalitis, less is known about TREX2. Like TREX1, TREX2 is ubiquitously expressed in all tissues examined. X-ray crystallography studies of TREX2-single strand DNA complexes revealed that TREX2 binds DNA as a dimer and may act to displace the second DNA strand, suggesting that TREX2 unzips and denatures double stranded DNA and feed the substrate DNA strand into the TREX2 active site. At least two isoforms of TREX2 are known to exist.Synonyms: 3'-5' exonuclease TREX2, Three prime repair exonuclease 2 |
| Gene ID: | 11219 |
| UniProt: | Q9BQ50 |

Application Details

| | |
|--------------------|---|
| Application Notes: | ELISA. Western blot: 2 - 4 µg/mL. Immunohistochemistry on paraffin sections. Other applications not tested. Optimal dilutions are dependent on conditions and should be determined by the user. |
| Restrictions: | For Research Use only |

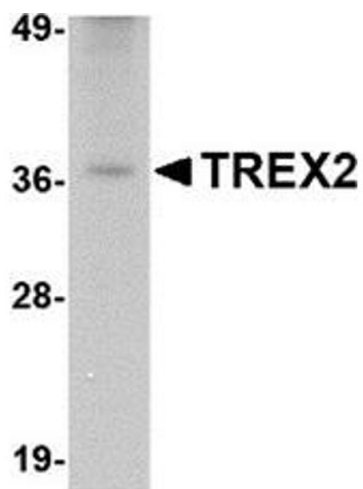
Handling

| | |
|--------------------|--|
| Buffer: | PBS containing 0.02 % sodium azide |
| Preservative: | Sodium azide |
| Precaution of Use: | This product contains sodium azide: a POISONOUS AND HAZARDOUS SUBSTANCE which should be handled by trained staff only. |
| Handling Advice: | Avoid repeated freezing and thawing. |
| Storage: | 4 °C/-20 °C |
| Storage Comment: | Store at 2 - 8 °C for up to one month or (in aliquots) at -20 °C for longer. |



Immunohistochemistry (Paraffin-embedded Sections)

Image 1. Immunohistochemistry of TREX2 in human liver tissue with this product at 2.5 µg/ml.



Western Blotting

Image 2. Western blot analysis of TREX2 in rat liver tissue lysate with this product at 2.5 µg/ml.