



[Go to Product page](#)

Datasheet for ABIN501093

anti-GID8/C20orf11 antibody (C-Term)

2 Images

Overview

Quantity:	0.1 mg
Target:	GID8/C20orf11 (GID8)
Binding Specificity:	C-Term
Reactivity:	Human, Mouse, Rat
Host:	Rabbit
Clonality:	Polyclonal
Conjugate:	This GID8/C20orf11 antibody is un-conjugated
Application:	Western Blotting (WB), Immunohistochemistry (Paraffin-embedded Sections) (IHC (p)), Enzyme Immunoassay (EIA)

Product Details

Immunogen:	TWA1 antibody was raised against a 17 amino acid peptide near the carboxy terminus of human TWA1.
Isotype:	IgG
Specificity:	This antibody detects C20orf11.
Cross-Reactivity (Details):	Species reactivity (tested):Human, mouse, rat
Purification:	Affinity chromatography

Target Details

Target:	GID8/C20orf11 (GID8)
---------	----------------------

Target Details

Alternative Name: C20orf11 ([GID8 Products](#))

Background: TWA1 was identified through a two hybrid-associated protein screen with RanBPM. TWA1 is well conserved through evolution and is localized within the nucleus. It interacts with RanBP9 and comprises a protein complex with RanBPM and Muskelin. TWA1 was found to possess the LisH-CTLH motif which is detected in proteins involved in microtubule dynamics, cell migration, nucleokinesis and chromosome segregation. These functions overlap with functions suggested for the RanGTPase cycle. Recent findings suggested that there is an as yet uncovered function of the RanGTPase cycle. Synonyms: Chromosome 20 open reading frame 11, TWA1, Two hybrid-associated protein 1 with RanBPM

Gene ID: 54994

NCBI Accession: [NP_060366](#)

Application Details

Application Notes: ELISA. Western blot: 1 - 2 µg/mL. Immunohistochemistry on paraffin sections.
Other applications not tested.
Optimal dilutions are dependent on conditions and should be determined by the user.

Restrictions: For Research Use only

Handling

Buffer: PBS containing 0.02 % sodium azide

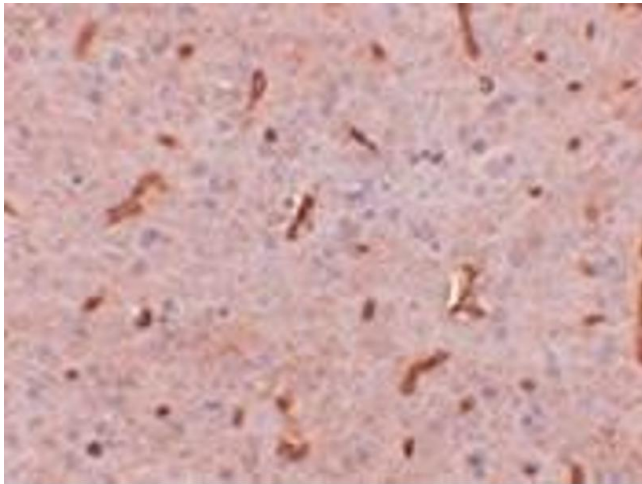
Preservative: Sodium azide

Precaution of Use: This product contains sodium azide: a POISONOUS AND HAZARDOUS SUBSTANCE which should be handled by trained staff only.

Handling Advice: Avoid repeated freezing and thawing.

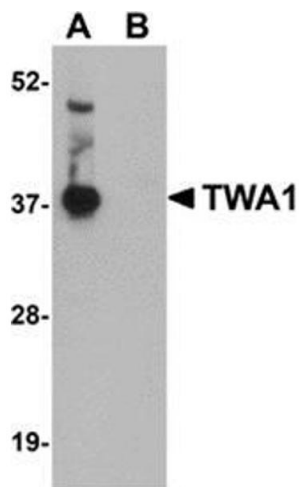
Storage: 4 °C/-20 °C

Storage Comment: Store at 2 - 8 °C for up to one month or (in aliquots) at -20 °C for longer.



Immunohistochemistry (Paraffin-embedded Sections)

Image 1. Immunohistochemistry of TWA1 in rat brain tissue with this product at 2.5 µg/ml.



Western Blotting

Image 2. Western blot analysis of TWA1 in human brain tissue lysate with this product at 1 µg/ml in (A) the absence and (B) the presence of blocking peptide.