



[Go to Product page](#)

Datasheet for ABIN501139
anti-ZBED2 antibody (N-Term)

2 Images

Overview

Quantity:	0.1 mg
Target:	ZBED2
Binding Specificity:	N-Term
Reactivity:	Human
Host:	Rabbit
Clonality:	Polyclonal
Conjugate:	This ZBED2 antibody is un-conjugated
Application:	Western Blotting (WB), Enzyme Immunoassay (EIA), Immunofluorescence (IF)

Product Details

Immunogen:	ZBED2 antibody was raised against a 15 amino acid peptide from near the amino terminus of human ZBED2.
Isotype:	IgG
Specificity:	This antibody detects ZBED2. The antibody is predicted to have no cross-reactivity to ZBED1 or ZBED3.
Cross-Reactivity (Details):	Species reactivity (tested):Human
Purification:	Affinity chromatography

Target Details

Target:	ZBED2
---------	-------

Target Details

Alternative Name: ZBED2 ([ZBED2 Products](#))

Background: The ZBED2 protein possesses a BED-type zinc finger, a 50 to 60 amino acid domain that contains a characteristic motif with two highly conserved aromatic positions, as well as a shared pattern of cysteines and histidines that is predicted to form the zinc finger. ZBED2 was identified through a screening of 37 human gastric cancer cDNA libraries. While the function of this protein unknown at this time, the presence of the zinc finger suggests that it may have DNA or RNA binding properties. Synonyms: Zinc finger BED domain-containing protein 2

Gene ID: 79413

NCBI Accession: [NP_078784](#)

Application Details

Application Notes: ELISA. Western blot: 1 - 2 µg/mL. Immunfluorescence.
Other applications not tested.
Optimal dilutions are dependent on conditions and should be determined by the user.

Restrictions: For Research Use only

Handling

Buffer: PBS containing 0.02 % sodium azide

Preservative: Sodium azide

Precaution of Use: This product contains sodium azide: a POISONOUS AND HAZARDOUS SUBSTANCE which should be handled by trained staff only.

Handling Advice: Avoid repeated freezing and thawing.

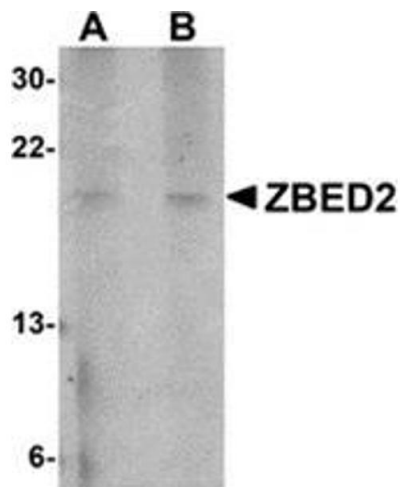
Storage: 4 °C/-20 °C

Storage Comment: Store at 2 - 8 °C for up to one month or (in aliquots) at -20 °C for longer.



Immunofluorescence

Image 1. Immunocytochemistry of ZBED2 in A549 cells with this product at 5 μ g/ml.



Western Blotting

Image 2. Western blot analysis of ZBED2 in A549 cell lysate with this product at (A) 1 and (B) 2 μ g/ml.