

Datasheet for ABIN501147
anti-ZBTB1 antibody (Center)

2 Images

[Go to Product page](#)

Overview

Quantity:	0.1 mg
Target:	ZBTB1
Binding Specificity:	Center
Reactivity:	Human, Mouse, Rat
Host:	Rabbit
Clonality:	Polyclonal
Conjugate:	This ZBTB1 antibody is un-conjugated
Application:	Western Blotting (WB), Immunohistochemistry (Paraffin-embedded Sections) (IHC (p)), Enzyme Immunoassay (EIA)

Product Details

Immunogen:	ZBTB1 antibody was raised against a 14 amino acid peptide near the center of human ZBTB1.
Isotype:	IgG
Specificity:	This antibody detects ZBTB1. The antibody will not cross-react with ZBTB2.
Cross-Reactivity (Details):	Species reactivity (tested): Human, mouse, rat
Purification:	Affinity chromatography

Target Details

Target:	ZBTB1
Alternative Name:	ZBTB1 (ZBTB1 Products)

Target Details

Background:	ZBTB1 is a zinc finger protein that also contains BTB (BR-C, ttk and bab) domain. While little is known about this protein or the related protein ZBTB2, its expression is known to be down-regulated in human bronchial epithelial cells in response to the presence of Vanadium. Recently, expression of variant ZBTB1 protein has been associated with increased age-related macular degeneration. At least two isoforms of ZBTB1 are known to exist.Synonyms: KIAA0997, Zinc finger and BTB domain-containing protein 1
-------------	-----------------------------------------------------------------------------------------------------------------------------------------------------------------------------------------------------------------------------------------------------------------------------------------------------------------------------------------------------------------------------------------------------------------------------------------------------------------------------------------------------------------------------

Gene ID:	22890
----------	-------

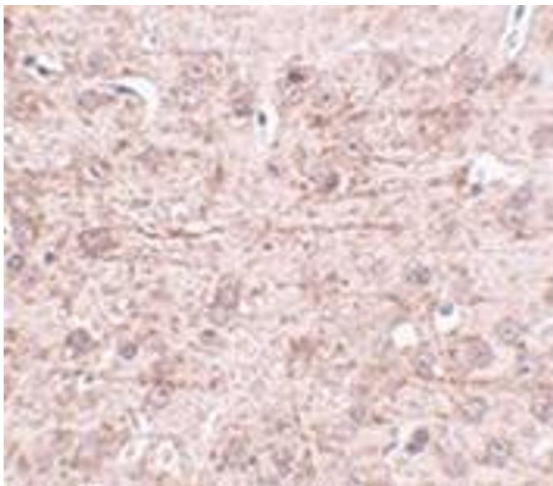
Application Details

Application Notes:	ELISA. Western blot: 1 - 2 µg/mL. Immunohistochemistry on paraffin sections. Other applications not tested. Optimal dilutions are dependent on conditions and should be determined by the user.
--------------------	-------------------------------------------------------------------------------------------------------------------------------------------------------------------------------------------------------

Restrictions:	For Research Use only
---------------	-----------------------

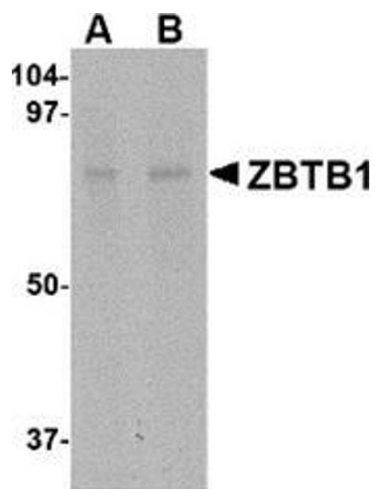
Handling

Buffer:	PBS containing 0.02 % sodium azide
Preservative:	Sodium azide
Precaution of Use:	This product contains sodium azide: a POISONOUS AND HAZARDOUS SUBSTANCE which should be handled by trained staff only.
Handling Advice:	Avoid repeated freezing and thawing.
Storage:	4 °C/-20 °C
Storage Comment:	Store at 2 - 8 °C for up to one month or (in aliquots) at -20 °C for longer.



Immunohistochemistry (Paraffin-embedded Sections)

Image 1. Immunohistochemistry of ZBTB1 in mouse brain tissue with this product at 2.5 µg/ml.



Western Blotting

Image 2. Western blot analysis of ZBTB1 in HepG2 lysate with this product at (A) 1 and (B) 2 µg/ml.