

Datasheet for ABIN501157

## anti-ZCRB1 antibody (C-Term)



[Go to Product page](#)

### 1 Image

#### Overview

Quantity:	0.1 mg
Target:	ZCRB1
Binding Specificity:	C-Term
Reactivity:	Human, Mouse, Rat
Host:	Rabbit
Clonality:	Polyclonal
Conjugate:	This ZCRB1 antibody is un-conjugated
Application:	Western Blotting (WB), Enzyme Immunoassay (EIA)

#### Product Details

Immunogen:	ZCRB1 antibody was raised against a 17 amino acid peptide near the carboxy terminus of human ZCRB1.
Isotype:	IgG
Specificity:	This antibody detects ZCRB1.
Cross-Reactivity (Details):	Species reactivity (tested): Human, mouse, rat
Purification:	Affinity chromatography

#### Target Details

Target:	ZCRB1
Alternative Name:	ZCRB1 ( <a href="#">ZCRB1 Products</a> )

## Target Details

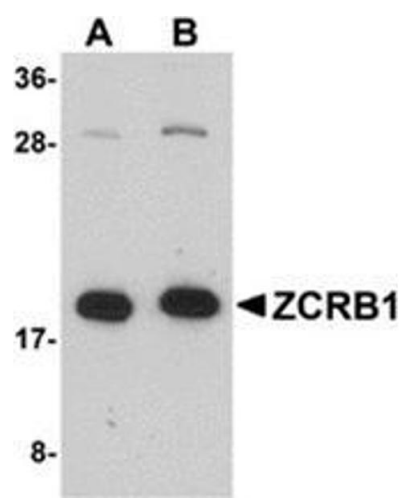
Background:	ZCRB1 is a nuclear protein first identified in a differential display screen involving morphine-dependence-related genes. Its expression is increased following morphine treatment and has been observed to be elevated in HepG2 cells. ZCRB1 contains a CCHC-type zing finger RNA-binding motif and can interact with the DBA-binding domain of the stem cell regulator C/EBP transcription factors. ZCRB1 was identified as one of the protein components of U11/U12 snRNPs, which are components of U12-type spliceosome and function as a molecular bridge connecting both ends of the intron, suggesting ZCRB1 may play a key role in U12-type splicing.Synonyms: Zinc finger CCHC-type and RNA-binding motif-containing protein 1
Gene ID:	85437
NCBI Accession:	<a href="#">NP_149105</a>

## Application Details

Application Notes:	ELISA. Western blot: 1 - 2 µg/mL. Other applications not tested. Optimal dilutions are dependent on conditions and should be determined by the user.
Restrictions:	For Research Use only

## Handling

Buffer:	PBS containing 0.02 % sodium azide
Preservative:	Sodium azide
Precaution of Use:	This product contains sodium azide: a POISONOUS AND HAZARDOUS SUBSTANCE which should be handled by trained staff only.
Handling Advice:	Avoid repeated freezing and thawing.
Storage:	4 °C/-20 °C
Storage Comment:	Store at 2 - 8 °C for up to one month or (in aliquots) at -20 °C for longer.



Western Blotting

**Image 1.** Western blot analysis of ZCRB1 in Raji cell lysate with this product at (A) 1 and (B) 2 µg/ml.