

Datasheet for ABIN501159  
**anti-SLC39A11 antibody (Center)**

## 2 Images

[Go to Product page](#)

## Overview

Quantity:	0.1 mg
Target:	SLC39A11
Binding Specificity:	Center
Reactivity:	Human, Mouse, Rat
Host:	Rabbit
Clonality:	Polyclonal
Conjugate:	This SLC39A11 antibody is un-conjugated
Application:	Western Blotting (WB), Immunohistochemistry (Paraffin-embedded Sections) (IHC (p)), Enzyme Immunoassay (EIA)

## Product Details

Immunogen:	ZIP11 antibody was raised against a 15 amino acid peptide near the center of the human ZIP11
Isotype:	IgG
Specificity:	This antibody detects Zinc transporter ZIP11 / SLC39A11. It will not cross-react with the zinc transporter ZIP10.
Cross-Reactivity (Details):	Species reactivity (tested): Human, mouse, rat
Purification:	Affinity chromatography

## Target Details

Target:	SLC39A11
---------	----------

## Target Details

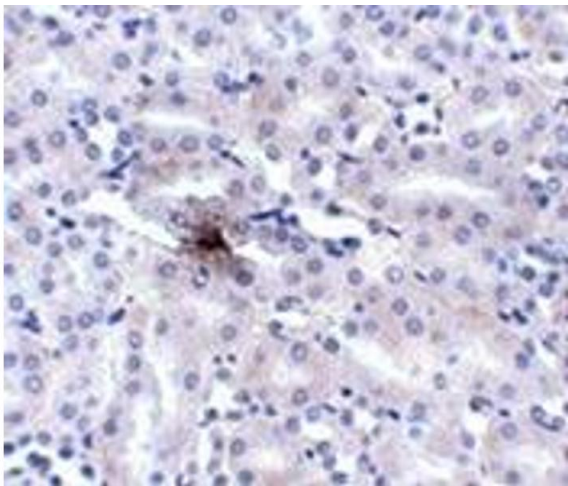
Alternative Name:	Zinc Transporter ZIP11 / SLC39A11 ( <a href="#">SLC39A11 Products</a> )
Background:	ZIP11, also known as Slc39A11, is a member of the broader ZIP family of multi-transmembrane domain metal ion transporters. Zinc is an essential ion for cells and plays significant roles in the growth, development, and differentiation. Members of the ZIP family generally transport metal ions from the cell exterior or lumen of intracellular organelles into the cytoplasm, as opposed to the ZnT (SLC30) family of zinc transporters that serve to reduce intracellular zinc availability by promoting zinc efflux from cells or into intracellular vesicles. At least three isoforms of ZIP11 are known to exist. Synonyms: C17orf26, Solute carrier family 39 member 11, ZIP-11, ZIP11, Zrt- and Irt-like protein 11
Gene ID:	201266

## Application Details

Application Notes:	ELISA. Western blot: 1 - 2 µg/mL. Immunohistochemistry on paraffin sections. Other applications not tested. Optimal dilutions are dependent on conditions and should be determined by the user.
Restrictions:	For Research Use only

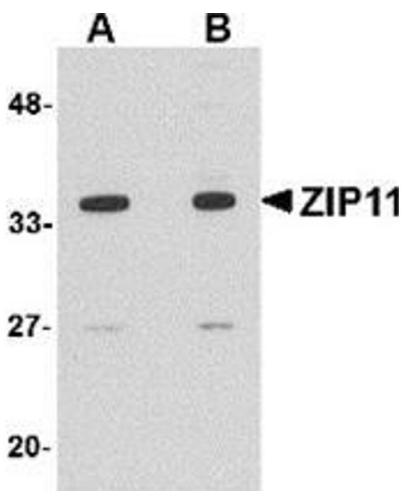
## Handling

Buffer:	PBS containing 0.02 % sodium azide
Preservative:	Sodium azide
Precaution of Use:	This product contains sodium azide: a POISONOUS AND HAZARDOUS SUBSTANCE which should be handled by trained staff only.
Handling Advice:	Avoid repeated freezing and thawing.
Storage:	4 °C/-20 °C
Storage Comment:	Store at 2 - 8 °C for up to one month or (in aliquots) at -20 °C for longer.



**Immunohistochemistry (Paraffin-embedded Sections)**

**Image 1.** Immunohistochemistry of ZIP11 in mouse kidney tissue AP31005PU-N at 2.5 µg/ml.



**Western Blotting**

**Image 2.** Western blot analysis of ZIP11 in mouse kidney tissue lysate with this product at (A) 1 and (B) 2 µg/ml.