



Datasheet for ABIN5013059
anti-ACAA1 antibody (AA 182-424)



[Go to Product page](#)

3 Images

Overview

| | |
|----------------------|--|
| Quantity: | 100 µL |
| Target: | ACAA1 |
| Binding Specificity: | AA 182-424 |
| Reactivity: | Human |
| Host: | Rabbit |
| Clonality: | Polyclonal |
| Conjugate: | This ACAA1 antibody is un-conjugated |
| Application: | Western Blotting (WB), Immunohistochemistry (IHC), Immunocytochemistry (ICC) |

Product Details

| | |
|---------------|--|
| Immunogen: | ACAA1 (Gly182-Asn424) |
| Isotype: | IgG |
| Specificity: | The antibody is a rabbit polyclonal antibody raised against ACAA1. It has been selected for its ability to recognize ACAA1 in immunohistochemical staining and western blotting. |
| Purification: | Antigen-specific affinity chromatography |

Target Details

| | |
|-------------------|---|
| Target: | ACAA1 |
| Alternative Name: | Acetyl Coenzyme A Acyltransferase 1 (ACAA1) (ACAA1 Products) |
| Background: | Alternative Names: ACAA, PTHIO, Peroxisomal 3-Oxoacyl-Coenzyme A Thiolase, Acetyl-CoA |

Target Details

acyltransferase, Beta-ketothiolase

Pathways: [Monocarboxylic Acid Catabolic Process](#)

Application Details

Application Notes:

- Western blotting: 1:50-400 Immunocytochemistry in formalin fixed cells: 1:50-500 Immunohistochemistry in formalin fixed frozen section: 1:50-500 Immunohistochemistry in paraffin section: 1:10-100 Enzyme-linked Immunosorbent Assay: 1:100-1:5000 Optimal working dilutions must be determined by end user.

Comment: The thermal stability is described by the loss rate. The loss rate was determined by accelerated thermal degradation test, that is, incubate the protein at 37°C for 48h, and no obvious degradation and precipitation were observed. The loss rate is less than 5% within the expiration date under appropriate storage condition.

Restrictions: For Research Use only

Handling

Format: Liquid

Concentration: Lot specific

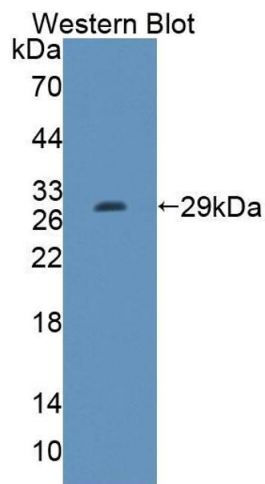
Buffer: PBS, pH 7.4, containing 0.02 % Sodium azide, 50 % glycerol.

Images



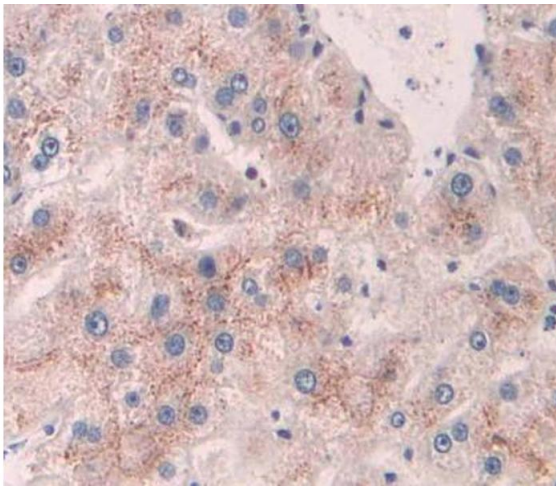
Western Blotting

Image 1. Western Blot; Sample: Human k562 cell lysate; Primary Ab: 3µg/ml Rabbit Anti-Human ACAA1 Antibody Second Ab: 0.2µg/mL HRP-Linked Caprine Anti-Rabbit IgG Polyclonal Antibody (Catalog: SAA544Rb19)



Western Blotting

Image 2. Figure. Western Blot; Sample: Recombinant protein.



Immunohistochemistry

Image 3. Used in DAB staining on formalin fixed paraffin-embedded liver tissue