

Datasheet for ABIN5013061
anti-ACAA2 antibody (AA 90-397)



[Go to Product page](#)

3 Images

Overview

Quantity:	100 µL
Target:	ACAA2
Binding Specificity:	AA 90-397
Reactivity:	Human
Host:	Rabbit
Clonality:	Polyclonal
Conjugate:	This ACAA2 antibody is un-conjugated
Application:	Western Blotting (WB), Immunohistochemistry (IHC), Immunocytochemistry (ICC)

Product Details

Immunogen:	ACAA2 (Arg90-Ala397)
Isotype:	IgG
Specificity:	The antibody is a rabbit polyclonal antibody raised against ACAA2. It has been selected for its ability to recognize ACAA2 in immunohistochemical staining and western blotting.
Purification:	Antigen-specific affinity chromatography

Target Details

Target:	ACAA2
Alternative Name:	Acetyl Coenzyme A Acyltransferase 2 (ACAA2) (ACAA2 Products)
Background:	Alternative Names: DSAEC, T1, Mitochondrial 3-Oxoacyl-Coenzyme A Thiolase, Beta-

Target Details

ketothiolase, Mitochondrial 3-oxoacyl-CoA thiolase

Pathways: [Monocarboxylic Acid Catabolic Process](#)

Application Details

Application Notes:

- Western blotting: 1:50-400 Immunocytochemistry in formalin fixed cells: 1:50-500 Immunohistochemistry in formalin fixed frozen section: 1:50-500 Immunohistochemistry in paraffin section: 1:10-100 Enzyme-linked Immunosorbent Assay: 1:100-1:5000 Optimal working dilutions must be determined by end user.

Comment: The thermal stability is described by the loss rate. The loss rate was determined by accelerated thermal degradation test, that is, incubate the protein at 37°C for 48h, and no obvious degradation and precipitation were observed. The loss rate is less than 5% within the expiration date under appropriate storage condition.

Restrictions: For Research Use only

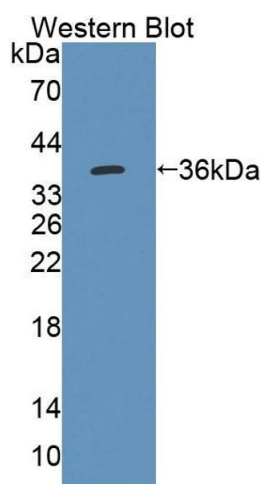
Handling

Format: Liquid

Concentration: Lot specific

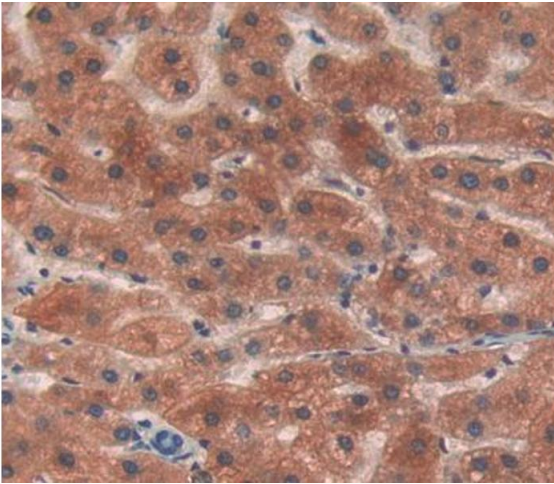
Buffer: PBS, pH 7.4, containing 0.02 % Sodium azide, 50 % glycerol.

Images



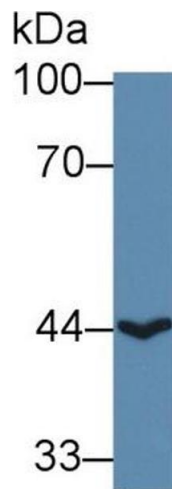
Western Blotting

Image 1. Figure. Western Blot; Sample: Recombinant protein.



Immunohistochemistry

Image 2. Used in DAB staining on formalin fixed paraffin-embedded liver tissue



Western Blotting

Image 3. Western Blot; Sample: Human HepG2 cell lysate;
Primary Ab: 1µg/ml Rabbit Anti-Human ACAA2 Antibody
Second Ab: 0.2µg/mL HRP-Linked Caprine Anti-Rabbit IgG Polyclonal Antibody (Catalog: SAA544Rb19)