



[Go to Product page](#)

Datasheet for ABIN5013077  
**anti-ACADL antibody (AA 214-430)**

3 Images

### Overview

Quantity:	100 µL
Target:	ACADL
Binding Specificity:	AA 214-430
Reactivity:	Human
Host:	Rabbit
Clonality:	Polyclonal
Conjugate:	This ACADL antibody is un-conjugated
Application:	Western Blotting (WB), Immunohistochemistry (IHC), Immunocytochemistry (ICC)

### Product Details

Immunogen:	ACADL (Ile214-Lys430)
Isotype:	IgG
Specificity:	The antibody is a rabbit polyclonal antibody raised against ACADL. It has been selected for its ability to recognize ACADL in immunohistochemical staining and western blotting.
Purification:	Antigen-specific affinity chromatography

### Target Details

Target:	ACADL
Alternative Name:	Acyl Coenzyme A Dehydrogenase, Long Chain (ACADL) ( <a href="#">ACADL Products</a> )
Background:	Alternative Names: LCAD, ACAD4, Long-chain specific acyl-CoA dehydrogenase, mitochondrial

## Target Details

Pathways: [Monocarboxylic Acid Catabolic Process](#)

## Application Details

Application Notes: 

- Western blotting: 1:50-400 Immunocytochemistry in formalin fixed cells: 1:50-500 Immunohistochemistry in formalin fixed frozen section: 1:50-500 Immunohistochemistry in paraffin section: 1:10-100 Enzyme-linked Immunosorbent Assay: 1:100-1:5000 Optimal working dilutions must be determined by end user.

Comment: The thermal stability is described by the loss rate. The loss rate was determined by accelerated thermal degradation test, that is, incubate the protein at 37°C for 48h, and no obvious degradation and precipitation were observed. The loss rate is less than 5% within the expiration date under appropriate storage condition.

Restrictions: For Research Use only

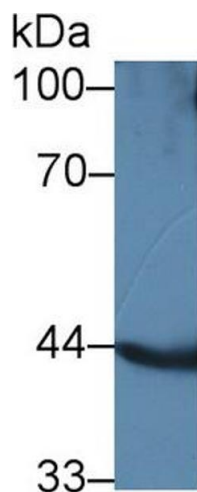
## Handling

Format: Liquid

Concentration: Lot specific

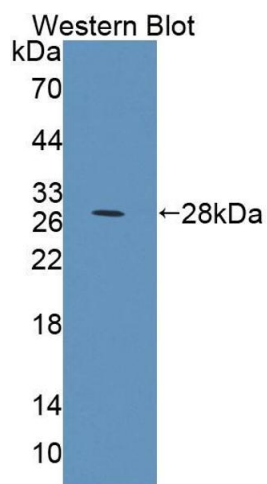
Buffer: PBS, pH 7.4, containing 0.02 % Sodium azide, 50 % glycerol.

## Images



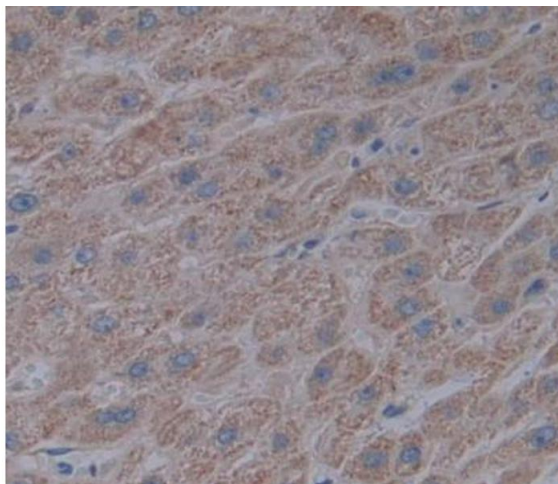
### Western Blotting

**Image 1.** Western Blot; Sample: Mouse Kidney lysate; Primary Ab: 1µg/ml Rabbit Anti-Human ACADL Antibody Second Ab: 0.2µg/mL HRP-Linked Caprine Anti-Rabbit IgG Polyclonal Antibody (Catalog: SAA544Rb19)



### Western Blotting

**Image 2.** Figure. Western Blot; Sample: Recombinant protein.



### Immunohistochemistry

**Image 3.** Used in DAB staining on formalin fixed paraffin-embedded liver tissue