

Datasheet for ABIN5013082
anti-APPL1 antibody (AA 404-673)

3 Images

[Go to Product page](#)

Overview

Quantity:	100 µL
Target:	APPL1
Binding Specificity:	AA 404-673
Reactivity:	Human
Host:	Rabbit
Clonality:	Polyclonal
Application:	Western Blotting (WB), Immunohistochemistry (IHC), Immunocytochemistry (ICC)

Product Details

Immunogen:	APPL1 (Phe404-Ser673)
Isotype:	IgG
Specificity:	The antibody is a rabbit polyclonal antibody raised against APPL1. It has been selected for its ability to recognize APPL1 in immunohistochemical staining and western blotting.
Purification:	Antigen-specific affinity chromatography

Target Details

Target:	APPL1
Alternative Name:	Adaptor Protein Phosphotyrosine Interaction PH Domain And leucine Zipper Containing Protein 1 (APPL1) (APPL1 Products)
Background:	Alternative Names: APPL, DIP13A, DIP13alpha, DCC-interacting protein 13-alpha

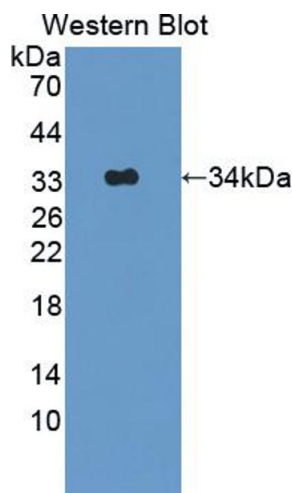
Application Details

Application Notes:	<ul style="list-style-type: none">Western blotting: 1:50-400 Immunocytochemistry in formalin fixed cells: 1:50-500 Immunohistochemistry in formalin fixed frozen section: 1:50-500 Immunohistochemistry in paraffin section: 1:10-100 Enzyme-linked Immunosorbent Assay: 1:100-1:5000 Optimal working dilutions must be determined by end user.
Comment:	The thermal stability is described by the loss rate. The loss rate was determined by accelerated thermal degradation test, that is, incubate the protein at 37°C for 48h, and no obvious degradation and precipitation were observed. The loss rate is less than 5% within the expiration date under appropriate storage condition.
Restrictions:	For Research Use only

Handling

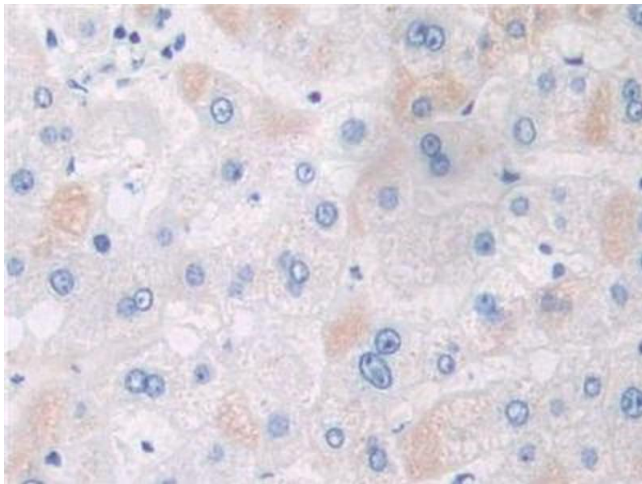
Format:	Liquid
Concentration:	Lot specific
Buffer:	PBS, pH 7.4, containing 0.02 % Sodium azide, 50 % glycerol.

Images



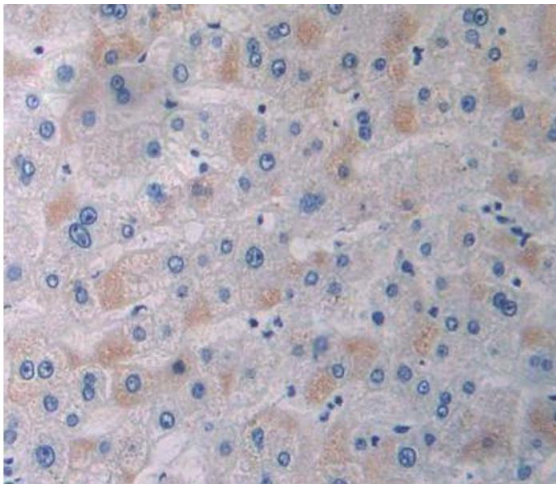
Western Blotting

Image 1. Figure. Western Blot; Sample: Recombinant protein.



Immunohistochemistry

Image 2. DAB staining on IHC-P; Samples: Human Liver Tissue



Immunohistochemistry

Image 3. Used in DAB staining on formalin fixed paraffin-embedded Kidney tissue