

Datasheet for ABIN5013108
anti-A4GALT antibody (AA 23-288)

3 Images

[Go to Product page](#)

Overview

Quantity:	100 µL
Target:	A4GALT
Binding Specificity:	AA 23-288
Reactivity:	Rat
Host:	Rabbit
Clonality:	Polyclonal
Conjugate:	This A4GALT antibody is un-conjugated
Application:	Western Blotting (WB), Immunohistochemistry (IHC), Immunocytochemistry (ICC)

Product Details

Immunogen:	CABIN1 (Ser23-Glu288)
Isotype:	IgG
Specificity:	The antibody is a rabbit polyclonal antibody raised against a4GALT. It has been selected for its ability to recognize a4GALT in immunohistochemical staining and western blotting.
Purification:	Antigen-specific affinity chromatography

Target Details

Target:	A4GALT
Alternative Name:	Alpha-1,4-Galactosyltransferase (a4GALT) (A4GALT Products)
Background:	Alternative Names: A4GALT, P1, A14GALT, A4GALT1, PK, Lactosylceramide 4-Alpha-

Target Details

Galactosyltransferase, Globotriaosylceramide Synthase, Gb3 synthase, P1/Pk synthase, CD77 Synthase

Application Details

Application Notes: • Western blotting: 1:50-400 Immunocytochemistry in formalin fixed cells: 1:50-500 Immunohistochemistry in formalin fixed frozen section: 1:50-500 Immunohistochemistry in paraffin section: 1:10-100 Enzyme-linked Immunosorbent Assay: 1:100-1:5000 Optimal working dilutions must be determined by end user.

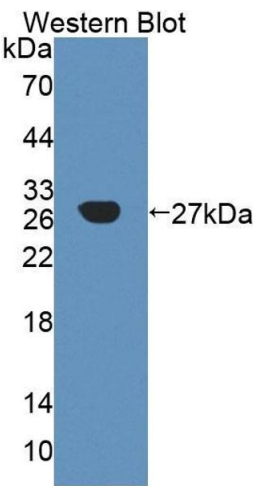
Comment: The thermal stability is described by the loss rate. The loss rate was determined by accelerated thermal degradation test, that is, incubate the protein at 37°C for 48h, and no obvious degradation and precipitation were observed. The loss rate is less than 5% within the expiration date under appropriate storage condition.

Restrictions: For Research Use only

Handling

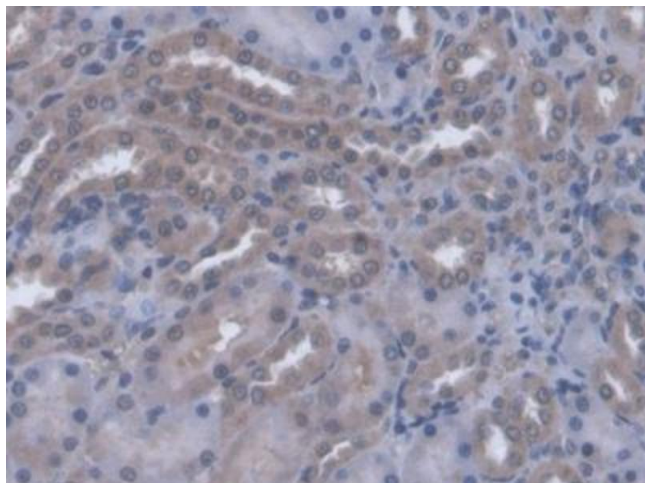
Format: Liquid
Concentration: Lot specific
Buffer: PBS, pH 7.4, containing 0.02 % Sodium azide, 50 % glycerol.

Images



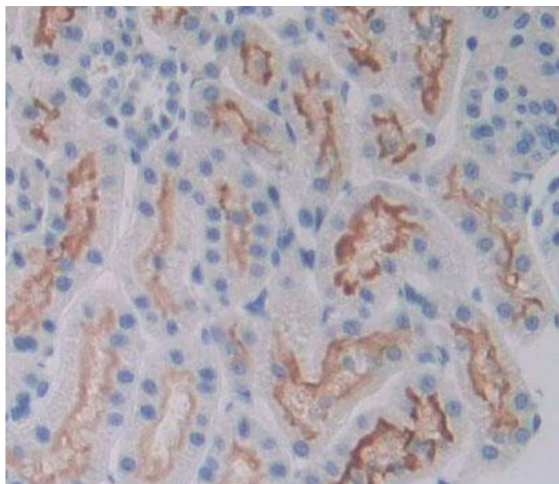
Western Blotting

Image 1. Figure. Western Blot; Sample: Recombinant protein.



Immunohistochemistry

Image 2. DAB staining on IHC-P; Samples: Rat Kidney Tissue



Immunohistochemistry

Image 3. Used in DAB staining on formalin fixed paraffin-embedded kidney tissue