

Datasheet for ABIN5013118  
**anti-C3orf15 antibody (AA 29-181)**



[Go to Product page](#)

**2** Images

## Overview

Quantity:	100 µL
Target:	C3orf15
Binding Specificity:	AA 29-181
Reactivity:	Human
Host:	Rabbit
Clonality:	Polyclonal
Conjugate:	This C3orf15 antibody is un-conjugated
Application:	Western Blotting (WB), Immunohistochemistry (IHC), Immunocytochemistry (ICC), Immunoprecipitation (IP)

## Product Details

Purpose:	Polyclonal Antibody to Amy1 Associated Protein Expressed In Testis (AAT1)
Immunogen:	AAT1 (Ser29-Leu181)
Isotype:	IgG
Specificity:	The antibody is a rabbit polyclonal antibody raised against AAT1. It has been selected for its ability to recognize AAT1 in immunohistochemical staining and western blotting.
Purification:	Antigen-specific affinity chromatography followed by Protein A affinity chromatography

## Target Details

Target:	C3orf15
---------	---------

## Target Details

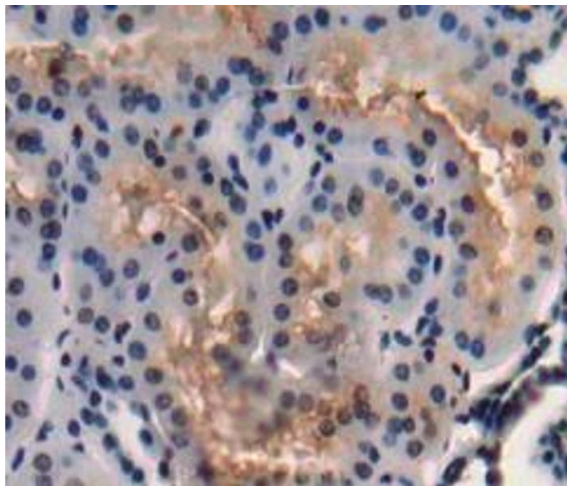
Alternative Name:	AAT1 ( <a href="#">C3orf15 Products</a> )
Background:	MAATS1, AAT1alpha, MYCBP-binding protein, MYCBP/AMY-1-associated testis-expressed protein 1

## Application Details

Application Notes:	Western blotting: 0.2-2 µg/mL, 1:250-2500 Immunohistochemistry: 5-20 µg/mL, 1:25-100 Immunocytochemistry: 5-20 µg/mL, 1:25-100 Optimal working dilutions must be determined by end user.
Comment:	The thermal stability is described by the loss rate. The loss rate was determined by accelerated thermal degradation test, that is, incubate the protein at 37°C for 48h, and no obvious degradation and precipitation were observed. The loss rate is less than 5% within the expiration date under appropriate storage condition.
Restrictions:	For Research Use only

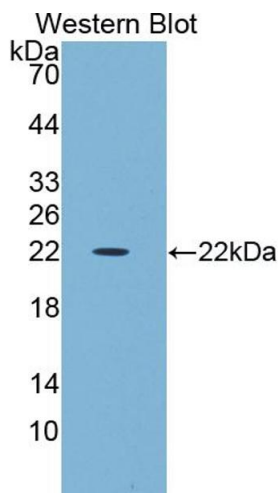
## Handling

Format:	Liquid
Concentration:	500 µg/mL
Buffer:	PBS, pH 7.4, containing 0.02 % Sodium azide, 50 % glycerol.
Preservative:	Sodium azide
Storage:	4 °C, -20 °C
Storage Comment:	Store at 4°C for frequent use. Stored at -20°C in a manual defrost freezer for two year without detectable loss of activity. Avoid repeated freeze-thaw cycles.



Immunohistochemistry

**Image 1.** Used in DAB staining on formalin fixed paraffin-embedded Kidney tissue



Western Blotting

**Image 2.** Figure. Western Blot; Sample: Recombinant protein.